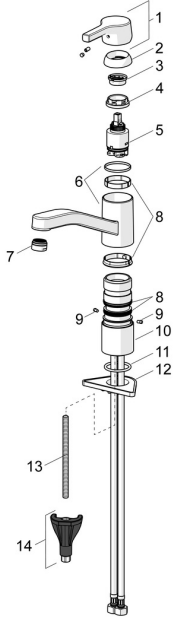


EAN: 4057304012310
static.hansa.com/565322030037

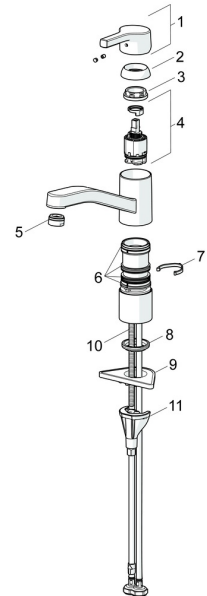
Spare parts



SP565322030037

| | Name | Code |
|----|--|----------|
| 01 | Lever Chrome | 59914712 |
| 02 | Covering cap, 33x3 mm Chrome | 59912504 |
| 03 | Temperature adjustment limiter | 59912325 |
| 04 | Tightening nut, M37x1, AF30 Discontinued | 59912111 |
| 05 | Cartridge, 3.5 Classic | 59913075 |
| 06 | Spout Chrome Discontinued | 59914432 |
| 07 | Aerator, M24x1 Discontinued | 59914461 |
| 08 | Sealing kit | 1001264V |
| 08 | Sealing kit Discontinued | 59913968 |
| 09 | Spout overturning stopper Chrome Discontinued | 59914437 |
| 10 | Raising socket | 59913973 |
| 11 | Bottom seal | 59914591 |
| 12 | Supporting plate | 59910008 |
| 13 | Fixing screw, M8x1, L=130 | 59914474 |
| 14 | Fixing set | 59914475 |

Spare parts



SP565322030037(2020)

| | Name | Code |
|----|---------------------------------|----------|
| 01 | Lever Chrome | 59914712 |
| 02 | Covering cap, 33x3 mm Chrome | 59912504 |
| 03 | Tightening nut, M37x1, SW30 | 1005680V |
| 04 | Cartridge, 3.5 Classic | 59913075 |
| 05 | Aerator, M24x1, 6 l/min Chrome | 59913727 |
| 06 | Sealing kit | 1001264V |
| 07 | Spout overturning stopper, 120° | 59914489 |
| 08 | Bottom seal | 59914591 |
| 09 | Supporting plate | 59910008 |
| 10 | Fixing screw, M8x1, L=130 | 59914474 |
| 11 | Fixing set | 59914475 |