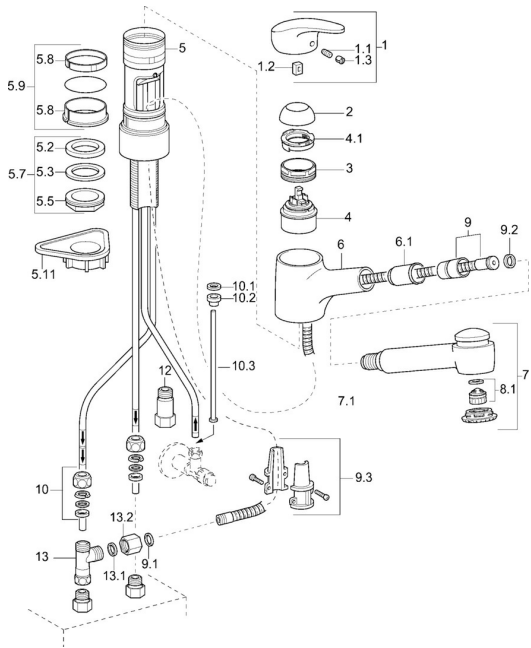


EAN: 7612158362973  
[static.hansa.com/01361173](http://static.hansa.com/01361173)

## Pièces de rechange

### SP01361173



|      | Nom                                  | Code     |
|------|--------------------------------------|----------|
| 1    | Levier, L=87 mm                      | 59914195 |
| 1.1  | Vis, M5x8, SW2.5                     | 59904755 |
| 1.2  | Kit de joints pour bec               | 59904778 |
| 1.3  | Capuchon Gris                        | 59912112 |
| 2    | Chape Chrome                         | 59912647 |
| 3    | Vis Loop, M50x1, SW45                | 59904775 |
| 4    | Cartouche, 4.8 eco                   | 59904601 |
| 4.1  | Hot water limiter                    | 59904759 |
| 5.7  | Ensemble de fixation, M33x1.5        | 59912717 |
| 5.9  | Set de fixation pour bec             | 59912646 |
| 5.11 | Plaque de fixation                   | 59910008 |
| 6    | Bec Chrome <b>Arrêté</b>             | 59912721 |
| 6.1  | Passage tablette                     | 59912724 |
| 7    | Bec extractible Chrome               | 59912723 |
| 8.1  | Aérateur, M22/24, ND                 | 59901553 |
| 9    | Tuyau, L=1400                        | 59912720 |
| 9.1  | Joint, 9.5x14.4x2                    | 59912551 |
| 9.2  | L'anneau d'étanchéité, d 21x12x2     | 59912304 |
| 9.3  | Retainer                             | 59906600 |
| 10   | Écrou du raccord                     | 59904969 |
| 10.1 | Set de fixation pour bec, 14.9x8.5x1 | 59902352 |
| 10.2 | Set de fixation pour bec, 10x8       | 59902272 |
| 10.3 | Tuyau                                | 59902151 |
| 12   | Clapet anti-retour, G3/8xG3/8        | 59912107 |
| 13   | T-connector, M14x1 ND                | 59913480 |
| 13.1 | Joint, 14.8x10x1.5 <b>Arrêté</b>     | 59905042 |