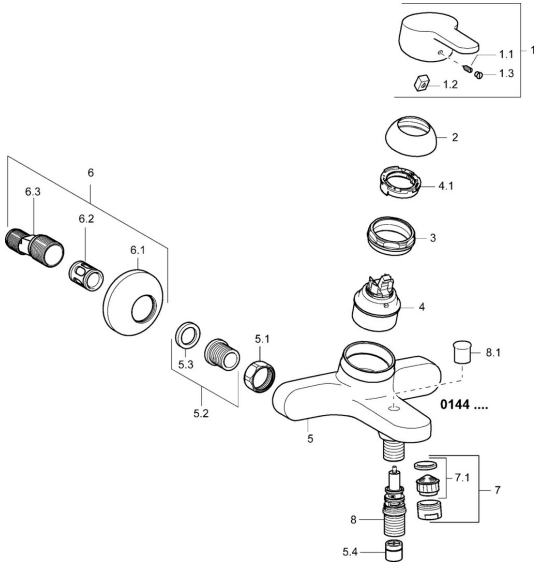


EAN: 4015474135383
static.hansa.com/01442173

Ersatzteile

SP01442173



| | Name | Art.-Nr. |
|------|--|----------|
| 1 | Hebel, L=110 Chrom Ausgelaufen | 01580076 |
| 1 | Hebel, L=86 mm Chrom | 01580073 |
| 1.1 | Schraube, M5x8, SW2.5 | 59904755 |
| 1.2 | Kunststoffadapter | 59904778 |
| 1.3 | Dekorkappe Grau | 59912112 |
| 2 | Abdeckkappe Chrom | 59913068 |
| 2 | Abdeckkappe Chrom | 59906563 |
| 3 | Schraube, M50x1, SW45 | 59913069 |
| 4 | Kartusche, 4,8 eco | 59904601 |
| 4.1 | Warmwasser Begrenzer | 59904759 |
| 5.1 | Anschlussmutter, G3/4, AF30 | 59902230 |
| 5.2 | Verbinder | 59913400 |
| 5.3 | Haltering, 23.9x15.2x2 | 59902689 |
| 5.4 | Rückschlagventil | 59905714 |
| 6 | S-Anschluss, G3/4xG1/2 Chrom | 59904793 |
| 6.1 | Rosette Chrom | 59904796 |
| 6.2 | Schalldämpfer | 59904792 |
| 6.3 | Exzenter-Anschluss, G3/4xG1/2, DN15 | 59910254 |
| 7 | Luftsprudler, M24x1 B Chrom | 59905872 |
| 7.1 | Luftsprudler, M22/M24 | 59905873 |
| 8 | Umsteller, automatisch | 59912706 |
| 8.1 | Umstellknopf Chrom | 59912801 |
| N.I. | Schlüssel, SW45/SW50 | 59905190 |