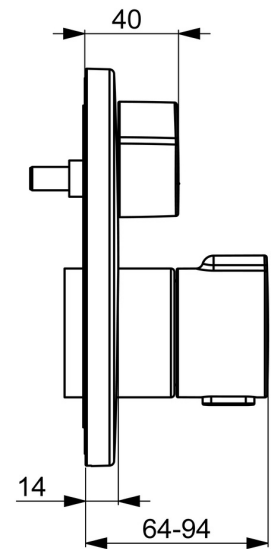
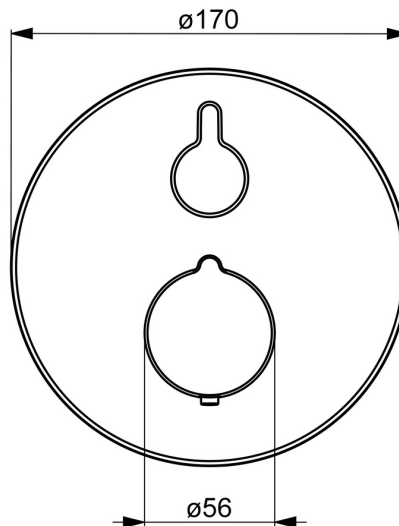
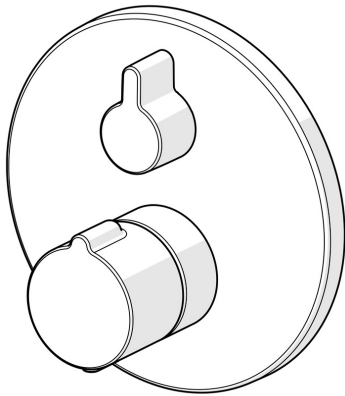


EAN: 4057304020117  
[static.hansa.com/8862904533](https://static.hansa.com/8862904533)



- Bathtub & Shower
- Trim Kit, Thermostatic
- Concealed wall mounting
- Matt black
- Temperature control handle, Flow control handle
- Turn operated diverter
- Safety stop against scalding at 38°C
- Thermostatic cartridge for automatic temperature control, Non-return valve(s)
- Inner body made of DZR brass, Manual, ceramic, pressure independent diverter with volume control and stop function for two outlets
- Rosette plate frame, Round rosette, Sleeve, Fastening of the function unit with screws, BLUECLICK for an easy, screwless trim plate installation, BLUETUNE alignment after installation of +/- 3,5°



## Technical data

### Flow properties

Flow-rate at 3 bar **20.4 / 20.4 l/min**

### Technical properties

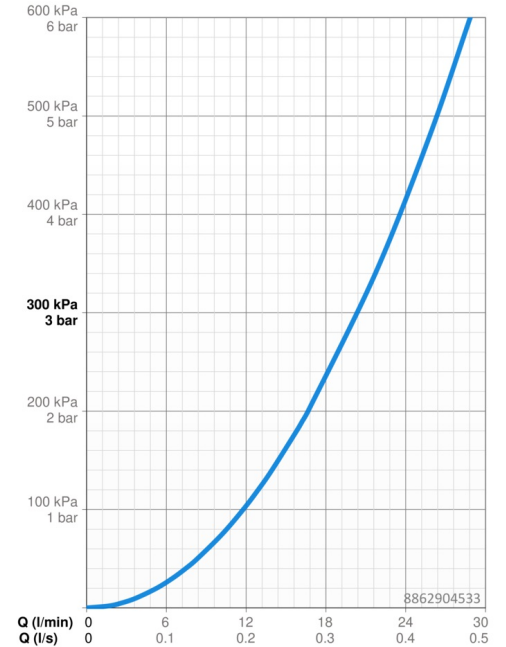
Hot water supply **max. +80°C**  
 Working pressure **1-10 bar**  
 Diameter **170 mm**  
 Backflow prevention (EN1717) **EB**  
 Material **Brass**

### Regulations

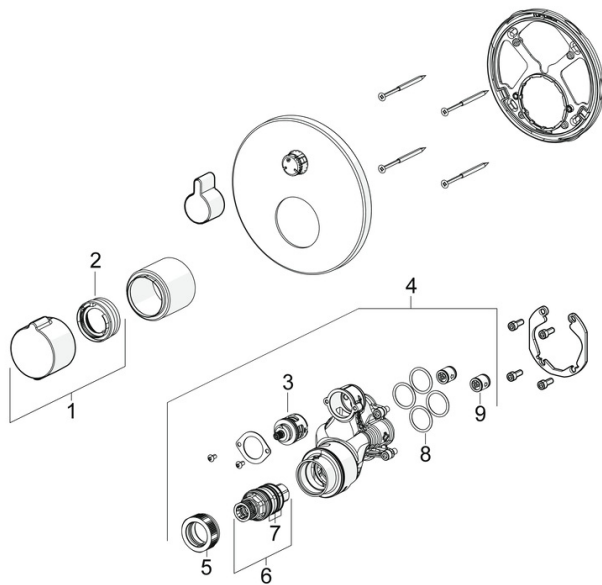
EN standard **EN 1111**  
 Noise class **I (ISO 3822)**

### Approvals and Declarations

Declaration of conformity **DoC**  
 EPD **S-P-07752**



## Spare parts



### SP8862904533

|      | Name                                  | Code        |
|------|---------------------------------------|-------------|
| 01   | Temperature control handle Matt black | 1018457V-33 |
| 02   | Temperature adjustment limiter        | 59914426    |
| 03   | Diverter                              | 59914183    |
| 04   | Functional unit, (8114, 8862)         | 59914311    |
| 05   | Tightening nut, M36x1.5, SW38         | 59914319    |
| 06   | Thermostatic cartridge, 3.4           | 59914114    |
| 07   | O-ring kit                            | 59914113    |
| 08   | O-ring, 23.47x2.62                    | 59914304    |
| 09   | Non-return valve                      | 59905714    |
| N.I. | Diverter, 120°                        | 59914655    |