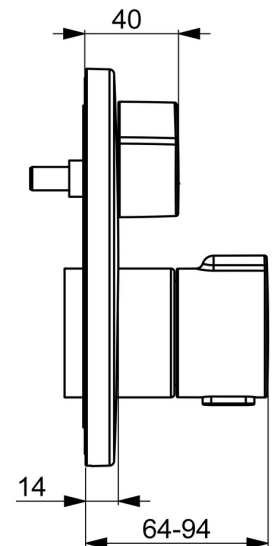
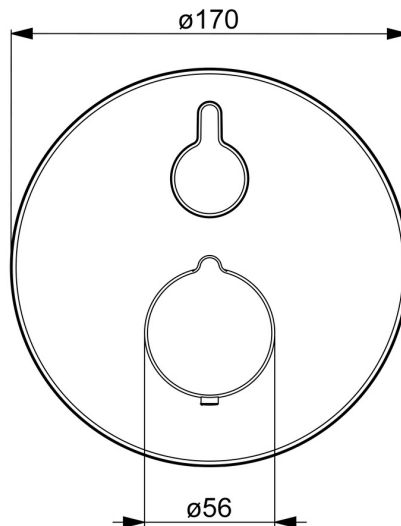
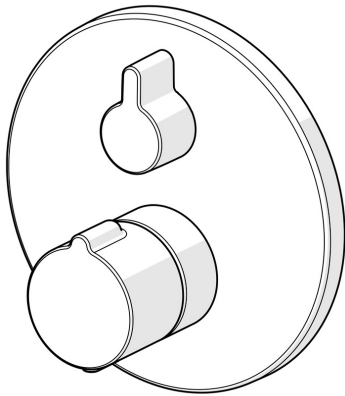


EAN: 4057304020100
static.hansa.com/8861904533



- Shower solutions
- Trim Kit, Thermostatic
- Concealed wall mounting
- Matt black
- Temperature control handle, Flow control handle
- Safety stop against scalding at 38°C
- Thermostatic cartridge for automatic temperature control, Ceramic head part for flow control, Non-return valve(s)
- Inner body made of DZR brass
- Rosette plate frame, Round rosette, Sleeve, Fastening of the function unit with screws, BLUECLICK for an easy, screwless trim plate installation, BLUETUNE alignment after installation of +/- 3,5°
- Without diverter



Technical data

Flow properties

Flow-rate at 3 bar **20.4 l/min**

Technical properties

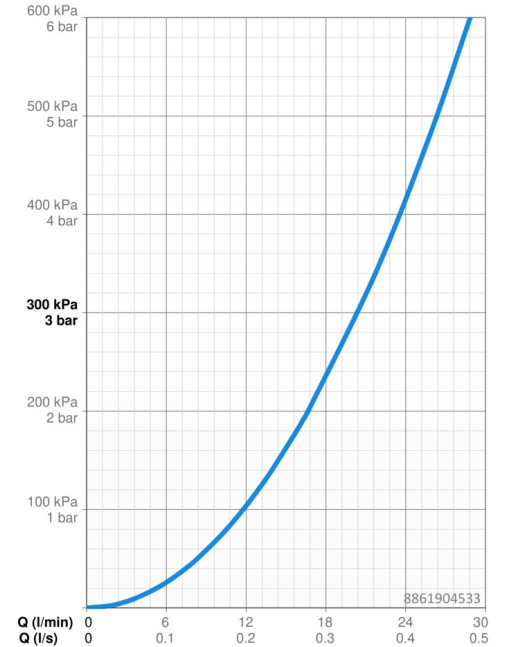
Hot water supply **max. +80°C**
 Working pressure **1-10 bar**
 Diameter **170 mm**
 Backflow prevention (EN1717) **EB**
 Material **Brass**

Regulations

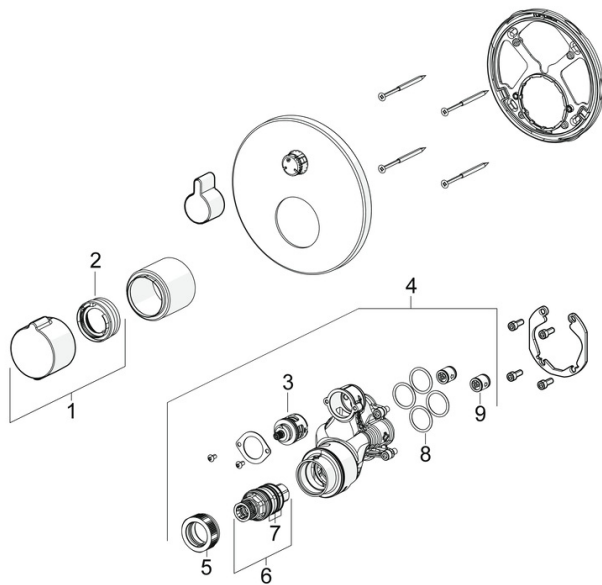
EN standard **EN 1111**
 Noise class **I (ISO 3822)**

Approvals and Declarations

Declaration of conformity **DoC**
 EPD **S-P-07752**



Spare parts



SP8861904533

	Name	Code
01	Temperature control handle Matt black	1018457V-33
02	Temperature adjustment limiter	59914426
03	Diverter	59914183
04	Functional unit, (8113, 8861)	59914316
05	Tightening nut, M36x1.5, SW38	59914319
06	Thermostatic cartridge, 3.4	59914114
07	O-ring kit	59914113
08	O-ring, 23.47x2.62	59914304
09	Non-return valve	59905714
N.I.	Diverter, 120°	59914655