



## Technical data

### Flow properties

Eco-flow at 3 bar	<b>7.2 l/min</b>
Flow-rate at 3 bar	<b>12.0/12.0 l/min</b>
Pressure loss with flow (0.2 l/s)	<b>2.5 bar</b>

### Technical properties

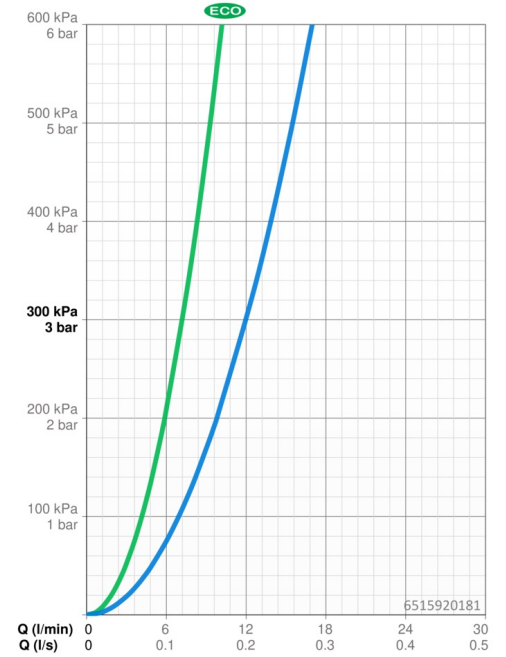
Hot water supply	<b>max. +80°C</b>
Working pressure	<b>1-10 bar</b>
Connection size	<b>G3/4</b>
Installation width	<b>150 ± 15 mm</b>
Backflow prevention (EN1717)	<b>EB</b>
Material	<b>Brass/Plastic</b>

### Regulations

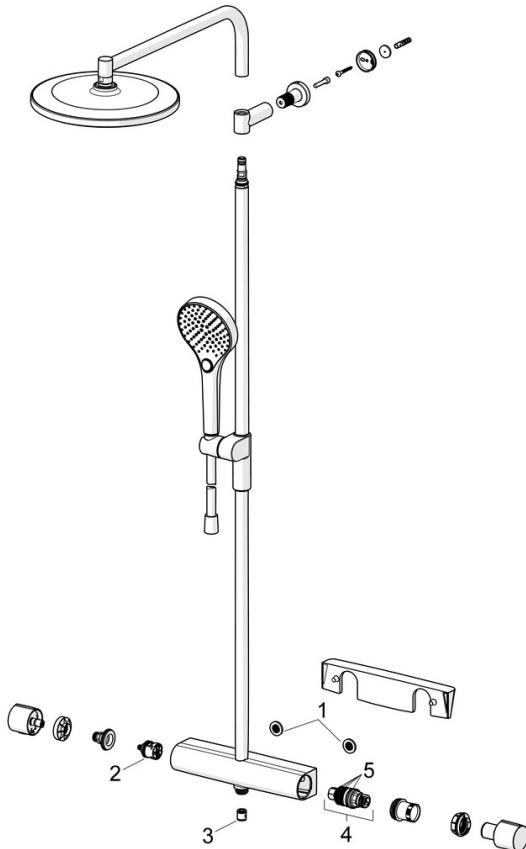
EN standard	<b>EN1111</b>
Noise class	<b>I (ISO 3822)</b>

### Approvals and Declarations

Declaration of conformity	<b>DoC</b>
EPD	<b>S-P-07819</b>



## Spare parts



### SP65159201CLR

	Name	Code
01	Filter sealing, G3/4	59911076
02	Diverter	59914183
03	Non-return valve, DN15	59914250
04	Thermostatic cartridge, 3.4	59914114
05	O-ring kit	59914113