

EAN: 4057304018114
static.hansa.com/6514020133



Designed to impress and give an elegant solution for any bathroom.

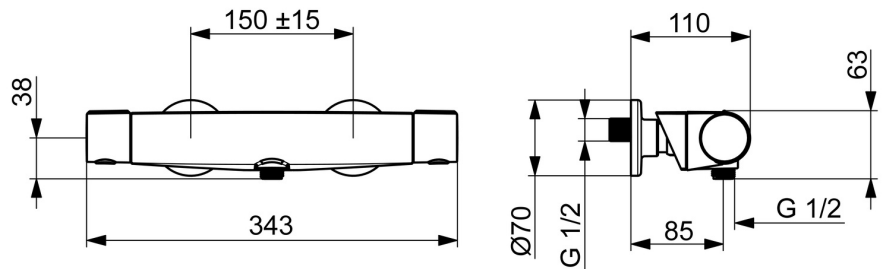
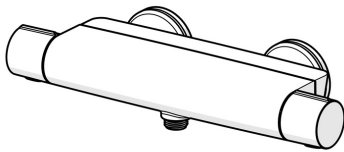
This thermostat gives you a most comfortable and enjoyable shower experience every day. With focus on high performance while still have and eye on the aesthetics and details to secure an elegant installation.

The handles are designed to be elegant while still providing a good grip for easy.

Our new developed magnetic shelf "MagShelf" completes the design while covering the connection to the wall.

Elegant design and total enjoyment

- Shower solutions
- Thermostatic
- Wall mounted
- Matt black
- Standard aerator
- Temperature control handle, Flow control handle, Hot/Cold symbols, Easy-Grip surface, Eco feature for water flow
- MagShelf. Removable shelf with magnetic attachment
- Safety stop against scalding at 38°C, The housing of the fittings conducts minimal heat
- Ceramic head part for flow control, Thermostatic cartridge for automatic temperature control, Non-return valve(s), Litter filter(s)
- Eccentric coupling(s), Cover plate(s), Silencer(s)
- Inner body made of DZR brass



Technical data

Flow properties

Eco-flow at 3 bar	7.2 l/min
Flow-rate at 3 bar	13.2 l/min
Pressure loss with flow (0.2 l/s)	2.5 bar

Technical properties

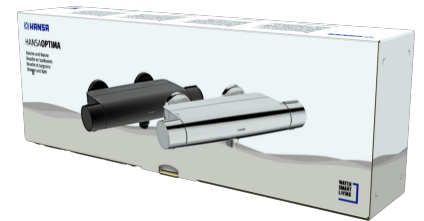
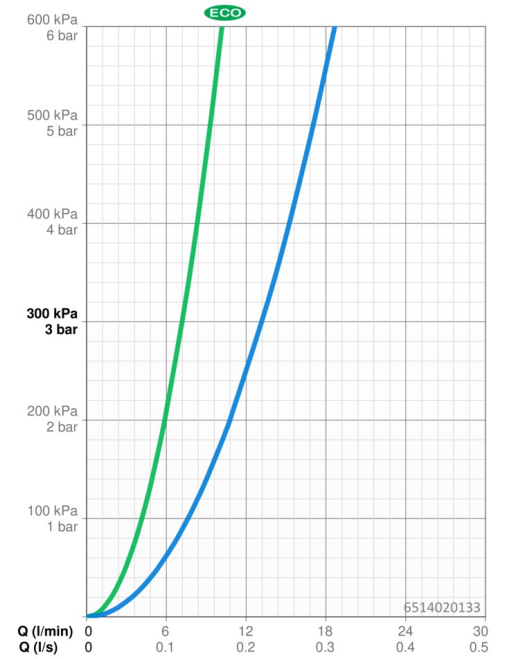
Hot water supply	max. +80°C
Working pressure	1-10 bar
Connection size	G3/4
Installation width	150 ± 15 mm
Backflow prevention (EN1717)	EB
Material	Brass/Plastic

Regulations

EN standard	EN1111
Noise class	I (ISO 3822)

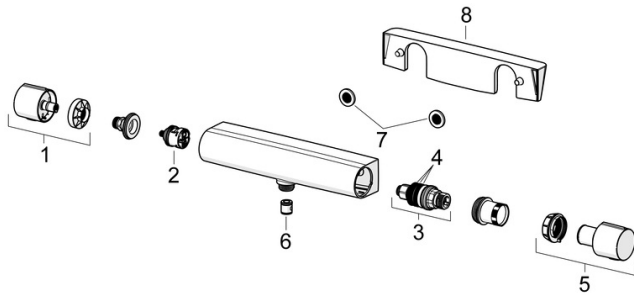
Approvals and Declarations

Declaration of conformity	DoC
EPD	S-P-06397



Spare parts

SP6514020133



	Name	Code
01	Flow control handle Matt black	1006775V-33
02	Diverter	59914183
03	Thermostatic cartridge, 3.4	59914114
04	O-ring kit	59914113
05	Temperature control handle Matt black	1006752V-33
06	Non-return valve, DN15	59914250
07	Filter sealing, G3/4	59911076
08	Shelf Matt black	1012484V-33