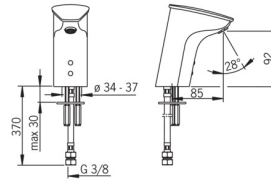


EAN: 4015474277113
static.hansa.com/64472210



- Washbasin
- Touchless
- Deck mounted
- Chrome
- Fixed spout
- Standard aerator
- Litter filter(s)
- Autofocus infrared sensor, Solenoid valve, Low battery indicator
- Flexible inlet pipes



Technical data

Technical properties

Hot water supply	max. +70°C
Working pressure	1-10 bar
Connection size	G3/8
Length / Height	85 mm
Material	Brass

Software settings

Afterflow period	2 s ± 1 s
Max. flow period	2 min

Electronic properties

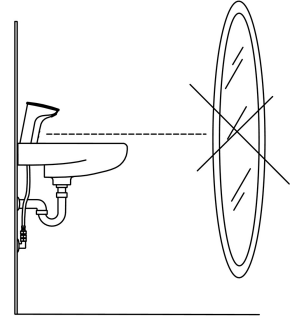
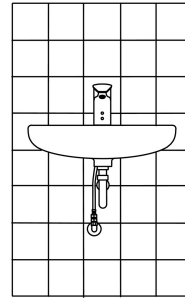
Battery	Lithium 2CR5 6 V
---------	-------------------------

Regulations

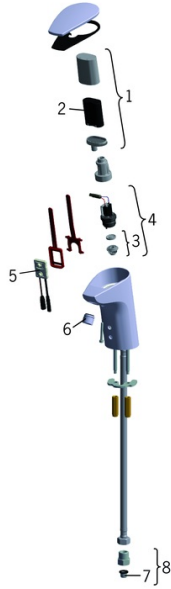
EU Directives	CE EMC Directive 2014/30/EU, RoHS Directive 2011/65/EU
EN standard	EN 15091, ETSI EN 301 489-1 V1.9.2, ETSI EN 300 328 v2.2.2, EN 61000-6-1:2007, EN 61000-6-3:2007+A1:2011+AC:2012, EN 60335-1:2012+A11+A13+A14+A2+A15:2021, Part 19.11.4
Protection class	IP 55

Approvals and Declarations

Declaration of conformity	EMC
---------------------------	------------



Spare parts



SP64472210

	Name	Code
01	Battery casing	59914154
02	Battery, 2CR5 6 V	59911670
03	Membrane for solenoid valve	1006500V
03	Membrane support ring Discontinued	59914090
04	Solenoid valve, 6 V	59914091
05	Sensor, 6 V	59914224
05	Sensor, 6 V / 72h	59914248
06	Aerator, M18x1	59914225
07	Litter filters	59914085
08	Nipple, G3/8xG3/8	59914226
N.I.	Flexible pipe, L=375, G3/8-M10x1 (2pcs)	59914095