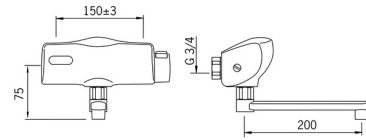
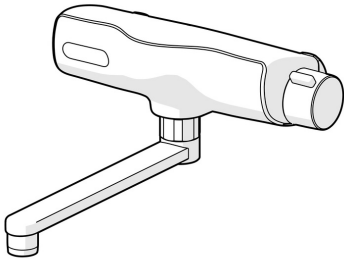


EAN: 4015474273498
static.hansa.com/64452201



- Public & Semi-public, Health & Care
- Touchless, Battery-operated
- Wall mounted
- Chrome
- Swivel spout, Profile construction
- Standard aerator
- Temperature control handle
- Litter filter(s), Non-return valve(s), Pressostatic cartridge for automatic temperature control
- Autofocus infrared sensor, Solenoid valve, Low battery indicator
- Eccentric coupling(s), with integrated shut-off valve(s)
- Software settings adjustable via magnetic key



Technical data

Flow properties

| | |
|---|------------------|
| Flow-rate at 3 bar (with flow controller) | 6.0 l/min |
| Pressure loss with flow (0.1 l/s) | 2 bar |

Technical properties

| | |
|------------------------------|--------------------|
| DN-size (nominal dimension) | DN15 |
| Hot water supply | max. +70°C |
| Working pressure | 1-10 bar |
| Installation width | 150 ± 15 mm |
| Projection | 250 mm |
| Backflow prevention (EN1717) | AA |
| Material | Brass |

Software settings

| | |
|------------------------|-----------------------------|
| Afterflow period | 2 s ± 1 s |
| Automatic flush | off (off/24/48/72 h) |
| Automatic flush period | 30 s |
| Max. flow period | 2 min |
| Opening range | 0-5 cm |

Electronic properties

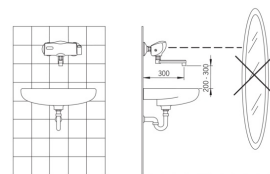
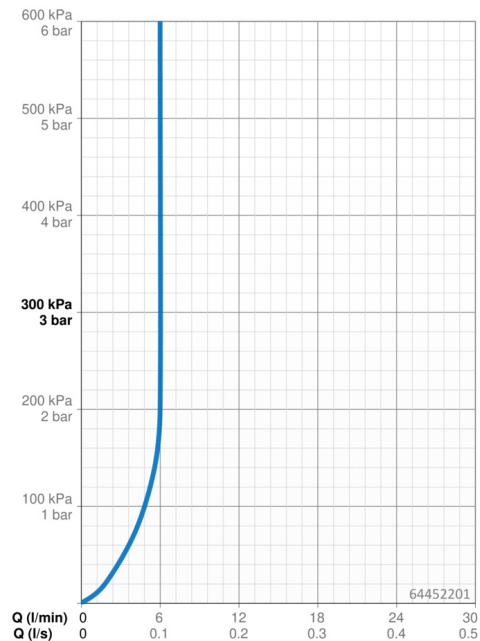
| | |
|---------|-------------------------|
| Battery | Lithium 2CR5 6 V |
|---------|-------------------------|

Regulations

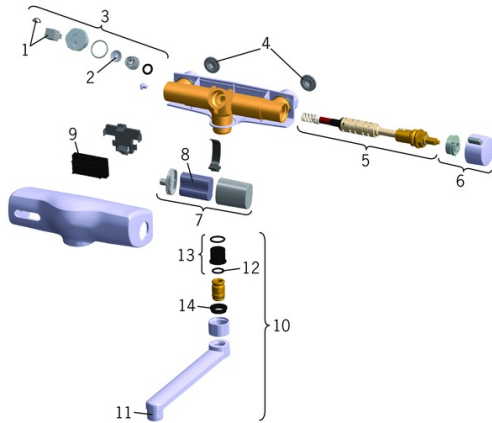
| | |
|------------------|---|
| EU Directives | C € EMC Directive 2014/30/EU , RoHS Directive 2011/65/EU |
| EN standard | EN 15091, ETSI EN 301 489-1 V1.9.2 , ETSI EN 300 328 v2.2.2 , EN 61000-6-1:2007 , EN 61000-6-3:2007+A1:2011+AC:2012 , EN 60335-1:2012+A11+A13+A1+A14+A2+A15:2021, Part 19.11.4 |
| Noise class | I (ISO 3822) |
| Protection class | IP 55 |

Approvals and Declarations

| | |
|---------------------------|---------------------------|
| UN38.3 | UN38-3 Maxell 2CR5 |
| Declaration of conformity | EMC |



Spare parts



SP64452201

| | Name | Code |
|------|-----------------------------|----------|
| 1 | Pilot valve | 59914149 |
| 2 | Membrane | 59914150 |
| 3 | Solenoid valve | 59914151 |
| 4 | Filter sealing, G3/4 | 59911076 |
| 5 | Pressostatic cartridge | 59914152 |
| 6 | Temperature control handle | 59914153 |
| 7 | Battery casing | 59914154 |
| 8 | Battery, 2CR5 6 V | 59911670 |
| 9 | Sensor, 6 V | 59914155 |
| 10 | Spout, L=100 | 59914230 |
| 10 | Spout, L=200 | 59914156 |
| 11 | Aerator, M22x1 | 59914157 |
| 12 | O-ring, 13.6x2.4 | 59914158 |
| 13 | Bushing (10 pcs), 18/20.6 | 59914159 |
| 14 | Retaining ring Discontinued | 59914160 |
| N.I. | Magnetic key | 59914378 |