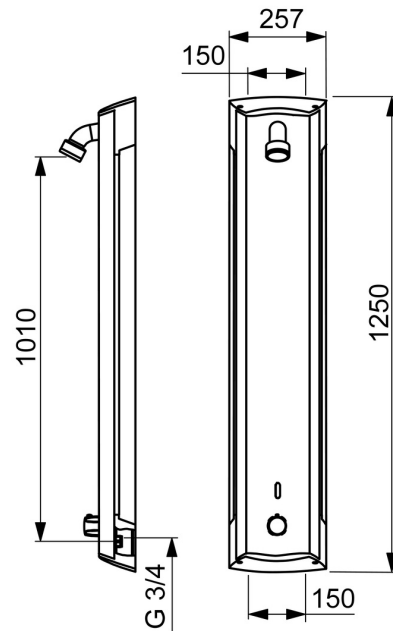


EAN: 4015474277205  
[static.hansa.com/64152200](https://static.hansa.com/64152200)



- Public & Semi-public
- Touchless, Thermostatic, Battery-operated
- Wall mounted
- Aluminum/Chrome
- Temperature control handle, Safety feature for water temperature
- Overhead shower
- Safety stop against scalding at 38°C
- Litter filter(s), Non-return valve(s)
- Autofocus infrared sensor, Solenoid valve, Low battery indicator
- Flexible inlet pipes
- Software settings adjustable via magnetic key



## Technical data

### Flow properties

Flow-rate at 3 bar	<b>11.7 l/min</b>
Flow-rate at 3 bar (with flow controller)	<b>10.8 l/min</b>
Pressure loss with flow (0.2 l/s)	<b>3 bar</b>

### Technical properties

DN-size (nominal dimension)	<b>DN15</b>
Hot water supply	<b>max. +70°C</b>
Working pressure	<b>1-10 bar</b>
Connection size	<b>G3/4</b>
Installation width	<b>150 mm</b>
Backflow prevention (EN1717)	<b>EB</b>
Material	<b>Aluminium</b>

### Software settings

Afterflow period	<b>5 s</b>
Automatic flush	<b>off (off/24/48/72 h)</b>
Automatic flush period	<b>30 s</b>
Max. flow period	<b>300 s (60/180/300/600 s)</b>
Opening range	<b>0-5 cm</b>

### Electronic properties

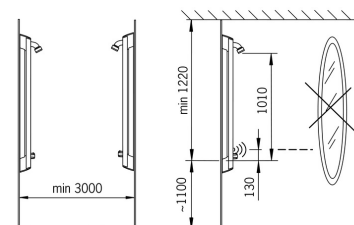
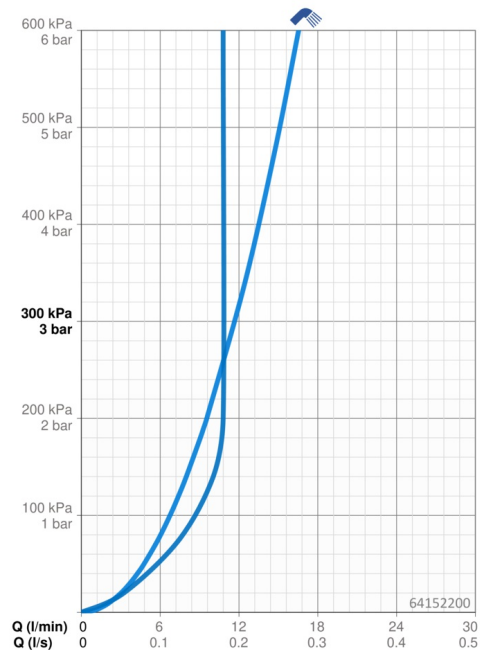
Battery	<b>Lithium 2CR5 6 V</b>
---------	-------------------------

### Regulations

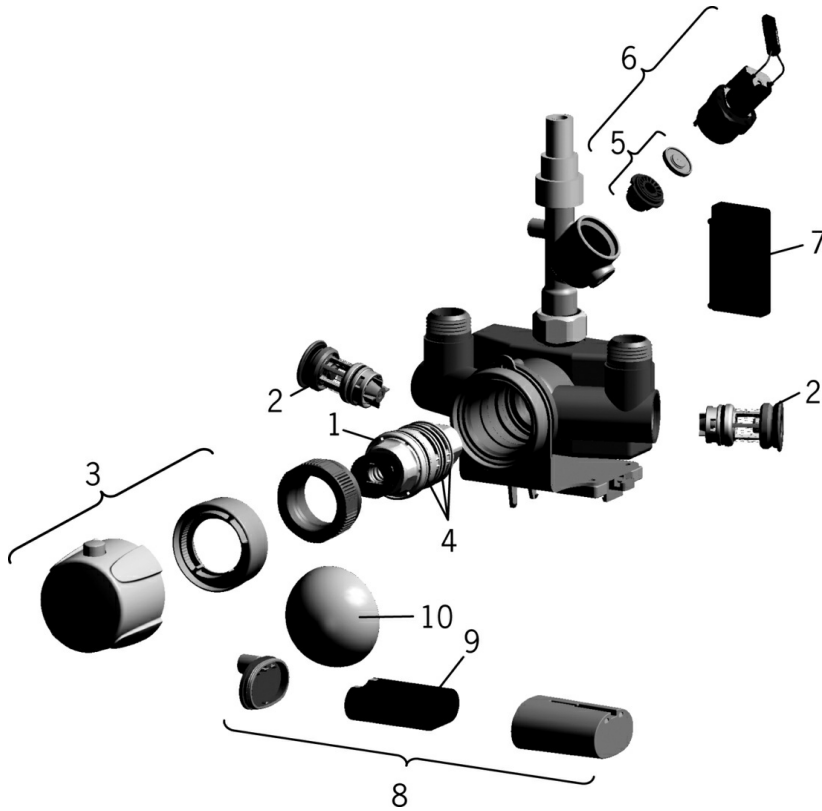
EU Directives	<b>C € EMC Directive 2014/30/EU, RoHS Directive 2011/65/EU</b>
EN standard	<b>EN 1111, EN 15091, ETSI EN 301 489-1 V1.9.2, ETSI EN 300 328 v2.2.2, EN 61000-6-1:2007, EN 61000-6-3:2007+A1:2011+AC:2012, EN 60335-1:2012+A11+A13+A14+A14+A2+A15:2021, Part 19.11.4</b>
Noise class	<b>I (ISO 3822)</b>
Protection class	<b>IP 55</b>

### Approvals and Declarations

UN38.3	<b>UN38-3 Maxell 2CR5</b>
Declaration of conformity	<b>EMC</b>



## Spare parts



### SP64152200

	Name	Code
01	Thermostatic cartridge, 3.4	59914114
02	One-way valve with litter screen	59914237
03	Temperature control handle	59914238
04	O-ring kit	59914113
05	Membrane for solenoid valve	1006500V
05	Membrane support ring Discontinued	59914090
06	Solenoid valve, 6 V	59914091
07	Sensor, 6 V	59914239
08	Battery casing, 2CR5 6 V	59914088
09	Battery, 2CR5 6 V	59911670
10	Protective cap Discontinued	59914240
N.I.	Temperature adjustment limiter	59914426