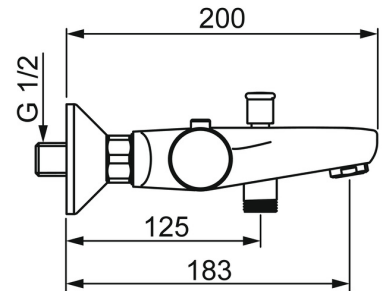
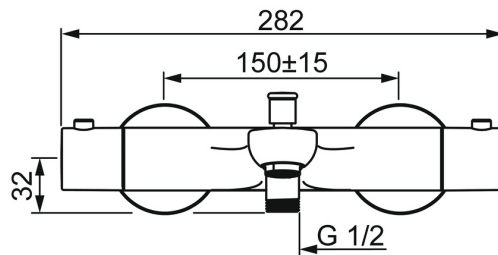
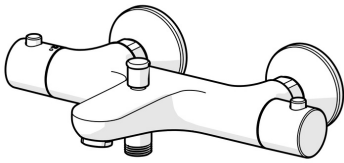


EAN: 4015474277649
static.hansa.com/58372101



- Bathtub & Shower
- Thermostatic
- Wall mounted
- Chrome
- Fixed spout
- Standard aerator
- Temperature control handle, Flow control handle, Eco feature for water flow
- Pull operated diverter, Automatic reset
- Eco flow control
- The housing of the fittings conducts minimal heat, Safety stop against scalding at 38°C
- Thermostatic cartridge for automatic temperature control, Ceramic head part for flow control, Non-return valve(s), Litter filter(s)
- Eccentric coupling(s)
- Inner body made of DZR brass
- protected against back-flow in domestic use (according to DIN EN 1717)



Technical data

Flow properties

Flow-rate at 3 bar **20.4 / 19.2 l/min**

Technical properties

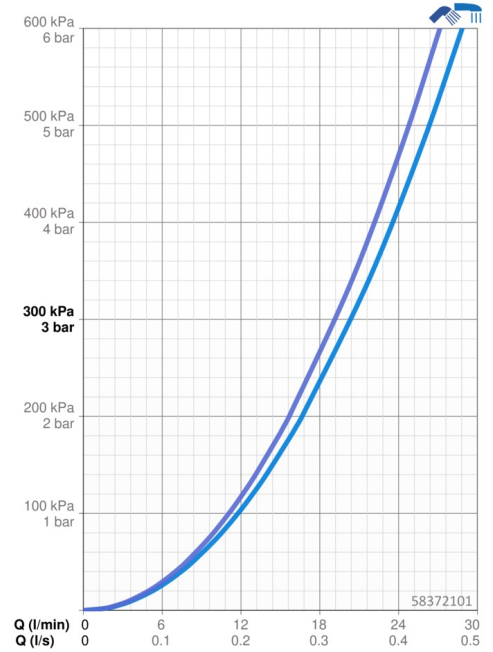
DN-size (nominal dimension) **DN15**
 Hot water supply **max. +80°C**
 Working pressure **1-10 bar**
 Connection size **G1/2**
 Installation width **150 ± 15 mm**
 Projection **180 mm**
 Backflow prevention (EN1717) **EB**
 Material **Brass**

Regulations

EN standard **EN 1111**
 Noise class **I (ISO 3822)**

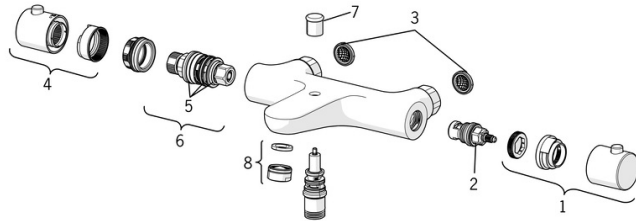
Approvals and Declarations

Declaration of conformity **DoC**



Spare parts

SP58372101



	Name	Code
01	Flow control handle	59914208
02	Headpart, G1/2	59914111
03	Filter sealing, G3/4	59911076
04	Temperature control handle	602062V
05	O-ring kit	59914113
06	Thermostatic cartridge, 3,4	59914114
07	Diverter	59912706
08	Aerator, M24x1 D	59911829
N.I.	Connection nut, G3/4, AF30	59902230
N.I.	Retaining ring, 23.9x15.2x2	59902689
N.I.	Eccentric, G3/4xG1/2	59904793
N.I.	Cover flange	59904796
N.I.	Non-return valve	59905714
N.I.	Nipple	59911075