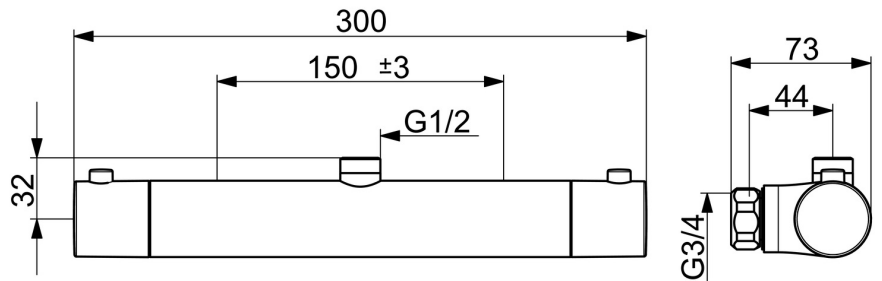
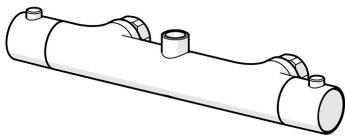


EAN: 4015474270817  
[static.hansa.com/58139001](http://static.hansa.com/58139001)



- Shower solutions
- Thermostatic
- Wall mounted
- Chrome
- Temperature control handle, Flow control handle, Eco feature for water flow
- Adjustable hot water stop (included, retrofittable), Safety stop against scalding at 38°C
- Thermostatic cartridge for automatic temperature control, Litter filter(s), Ceramic head part for flow control, Non-return valve(s)
- Inner body made of DZR brass
- Without couplings
- protected against back-flow in domestic use (according to DIN EN 1717)



## Technical data

### Flow properties

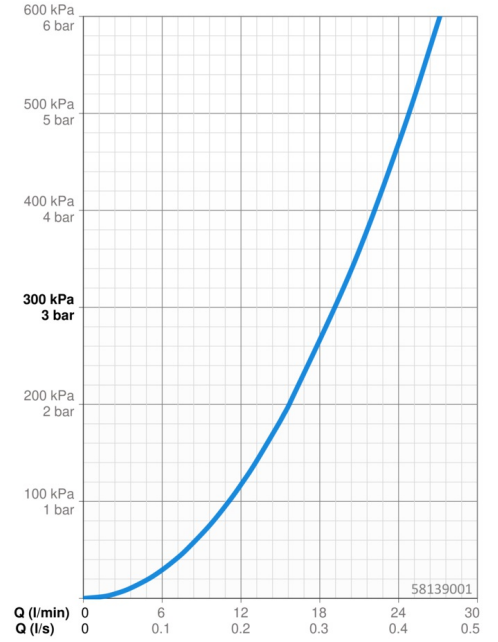
Flow-rate at 3 bar **19.2 l/min**

### Technical properties

DN-size (nominal dimension) **DN15**  
 Hot water supply **max. +80°C**  
 Working pressure **1-10 bar**  
 Backflow prevention (EN1717) **EB**

### Regulations

EN standard **EN 1111**



## Spare parts

### SP58139001

|      | Name                           | Code     |
|------|--------------------------------|----------|
| 1.1  | Connection nut, G3/4, AF30     | 59902230 |
| 1.3  | Retaining ring, 23.9x15.2x2    | 59902689 |
| 1.4  | Filter sealing, G3/4           | 59911076 |
| 3    | Flow control handle            | 59913854 |
| 3.1  | Cover                          | 59913850 |
| 3.2  | Screw, M4x8                    | 59913851 |
| 3.3  | Temperature adjustment limiter | 59913465 |
| 4    | Headpart, G1/2, 180°           | 59911103 |
| 4.1  | Ring                           | 59913469 |
| 5    | Temperature control handle     | 59913852 |
| 5.1  | Temperature adjustment limiter | 59913853 |
| 5.2  | Temperature adjustment limiter | 59913825 |
| 6    | Thermostatic cartridge, 2.7    | 59913823 |
| 6.1  | Screw, M6x9.5                  | 59901609 |
| 7    | Non-return valve               | 59905714 |
| 7.1  | Thread nipple, G1/2xM18x1      | 59911384 |
| N.I. | Non-return valve, DN10 (2016-) | 59914425 |

### SP58130101(2018)

|    | Name                        | Code     |
|----|-----------------------------|----------|
| 01 | Flow control handle         | 59914208 |
| 02 | Headpart, G1/2              | 59914207 |
| 03 | Filter sealing, G3/4        | 59911076 |
| 04 | Temperature control handle  | 602062V  |
| 05 | Thermostatic cartridge, 3.4 | 59914114 |

