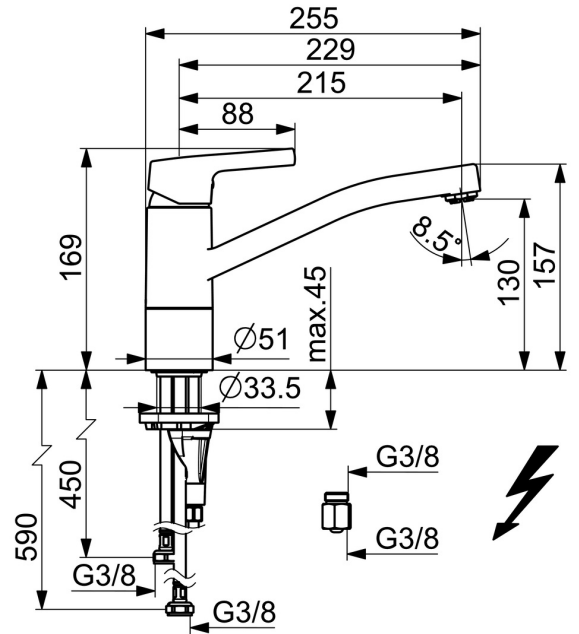
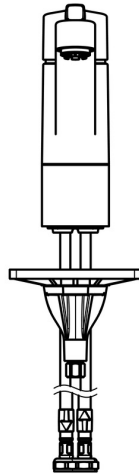
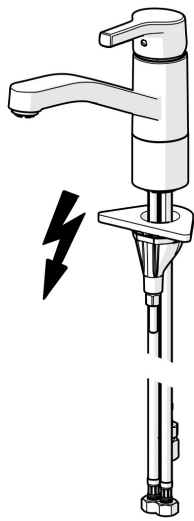


EAN: 4057304012389
static.hansa.com/56481103



- Kitchen
- Single-lever, Low pressure
- Deck mounted
- Chrome
- Swivel spout, Swivel range limiting option
- Laminar stream, Standard aerator
- Hot/Cold symbols, Single operating lever/handle
- Limitation option for maximum temperature and flow-rate, Adjustable hot water stop (included, retrofittable)
- \varnothing 35 mm ceramic cartridge for flow and temperature control
- Flexible inlet pipes
- Inner body made of DZR brass, 3S-installation system for safe and simple mounting



Technical data

Flow properties

Flow-rate at 3 bar **7.2 l/min**

Technical properties

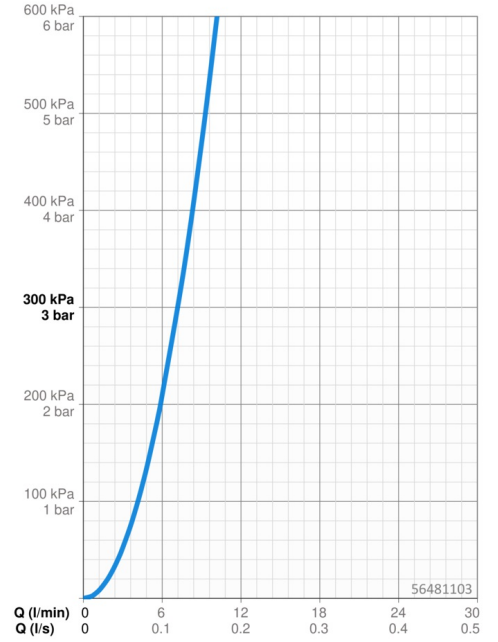
DN-size (nominal dimension) **DN15**
 Hot water supply **max. +70°C**
 Working pressure **0.5-5 bar**
 Connection size **G3/8**
 Projection **215 mm**
 Backflow prevention (EN1717) **AA**
 Material **Brass**

Regulations

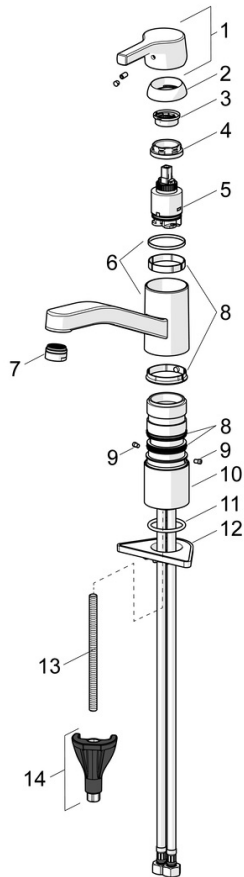
EN standard **EN 817**
 Noise class **I (ISO 3822)**

Approvals and Declarations

Declaration of conformity **DoC**
 EPD **S-P-06396**

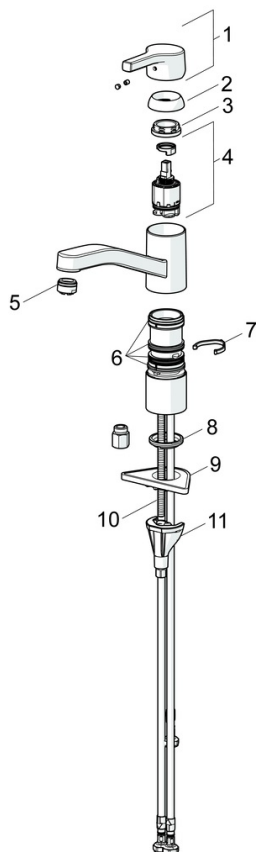


Spare parts



SP56481103

	Name	Code
01	Lever	59914712
02	Covering cap, 33x3 mm	59912504
03	Temperature adjustment limiter	59912325
04	Tightening nut, M37x1, AF30 Discontinued	59912111
05	Cartridge, 3.5 Classic	59913075
06	Spout Discontinued	59914432
07	Aerator, M24x1 A, low pressure	59902692
08	Sealing kit	1001264V
08	Sealing kit Discontinued	59913968
09	Spout overturning stopper Discontinued	59914437
10	Raising socket	59913973
11	Bottom seal	59914591
12	Supporting plate	59910008
13	Fixing screw, M8x1, L=130	59914474
14	Fixing set	59914475



SP56481103(2020)

	Name	Code
01	Lever	59914712
02	Covering cap, 33x3 mm	59912504
03	Tightening nut, M37x1, SW30	1005680V
04	Cartridge, 3.5 Classic	59913075
05	Aerator, M24x1 A, low pressure	59902692
06	Sealing kit	1001264V
07	Spout overturning stopper, 120°	59914489
08	Bottom seal	59914591
09	Supporting plate	59910008
10	Fixing screw, M8x1, L=130	59914474
11	Fixing set	59914475