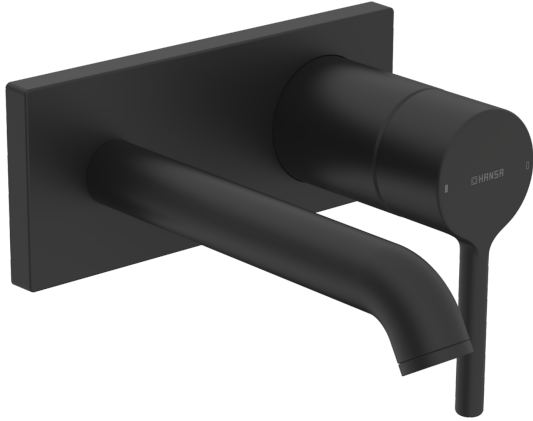


EAN: 4057304020032
static.hansa.com/5480210733

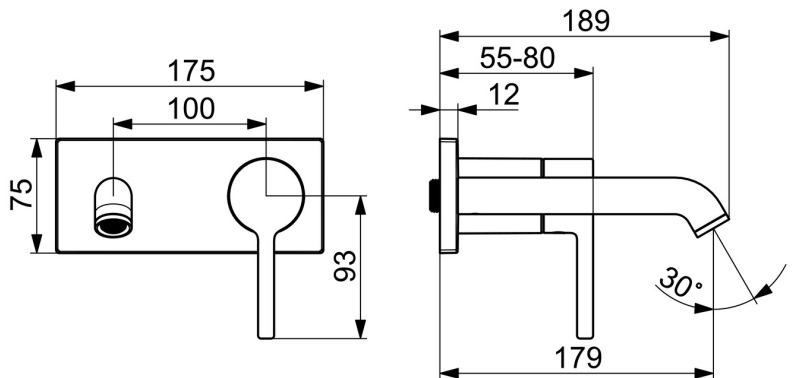
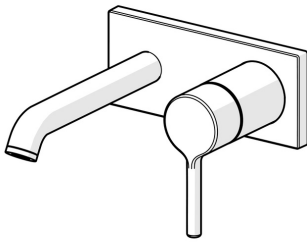


The HANSAVANTIS is the perfect fit for any bathroom, with a proven expert quality you can rely on, no matter your specific needs. Durable and long-lasting in both design and service life, this faucet brings you joy and confidence for years to come. Functional considerations and a dedicated level of detail offer a new user experience.

Elegant and clean designed
 High quality
 Sleek design
 Made in Europe

Washbasin faucet with maximum comfort

- Washbasin
- Trim Kit, Single-lever
- Concealed wall mounting
- Matt black
- Fixed spout
- PCA® - constant flow rate regardless of pressure variations
- Single operating lever/handle, Pin shape, Hot/Cold symbols
- Limitation option for maximum temperature and flow-rate, Adjustable hot water stop (included, retrofittable)
- Inner body made of DZR brass
- Rosette plate frame, Square rosette



Technical data

Flow properties

Flow-rate at 3 bar	6.0 l/min
Flow-rate at 3 bar (with flow controller)	6.0 l/min

Technical properties

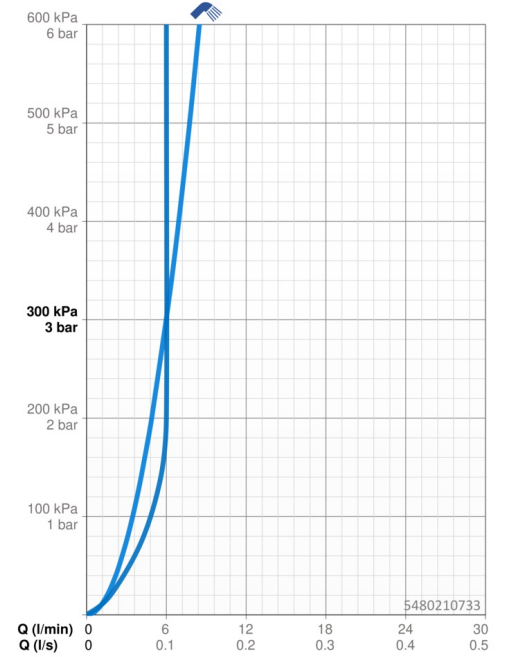
Hot water supply	max. +80°C
Working pressure	0.5-10 bar
Connection size	G1/2
Projection	179 mm
Backflow prevention (EN1717)	AA
Material	Brass

Regulations

EN standard	EN 817
-------------	---------------

Approvals and Declarations

Declaration of conformity	DoC
EPD	S-P-06391



Spare parts

SP5480210733

	Name	Code
01	Aerator and key, PCA 1.5 gpm Matt black	1012273V-33
02	Lever Matt black	1014994V-33

