

Technical data

Flow properties

Flow-rate at 3 bar (with flow controller) **6.0 l/min**

Technical properties

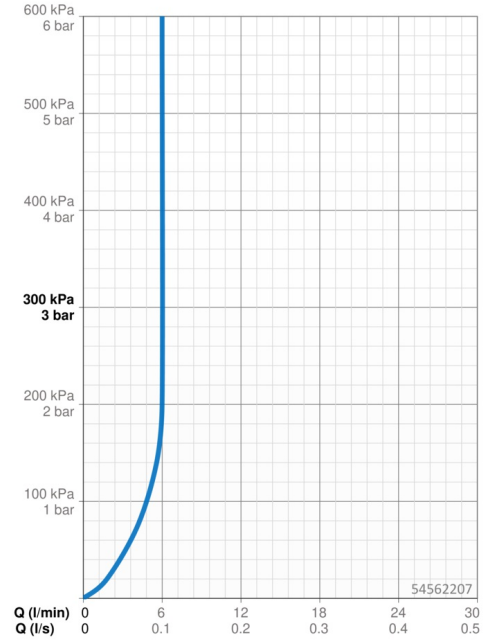
Hot water supply **max. +70°C**
 Working pressure **0.5-10 bar**
 Connection size **G3/8**
 Projection **133 mm**
 Backflow prevention (EN1717) **AA**
 Material **Brass**

Regulations

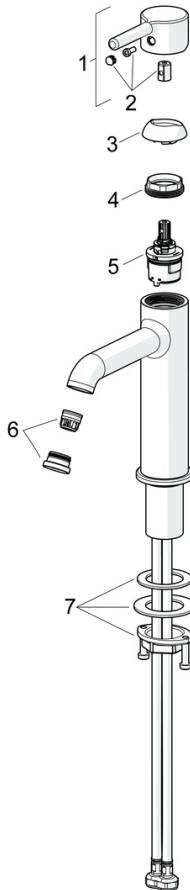
EN standard **EN 817**
 Noise class **I (ISO 3822)**

Approvals and Declarations

Declaration of conformity **DoC**
 EPD **S-P-06391**



Spare parts



SP54372207

	Name	Code
01	Lever	1014999V
02	Symbol plug	1012105V
03	Covering cap	1012132V
04	Tightening nut, M34x1.5	1012133V
05	Cartridge, 3.0	1014428V
06	Aerator and key, PCA 5.7 l/min	1012273V
07	Fixing set	59913479