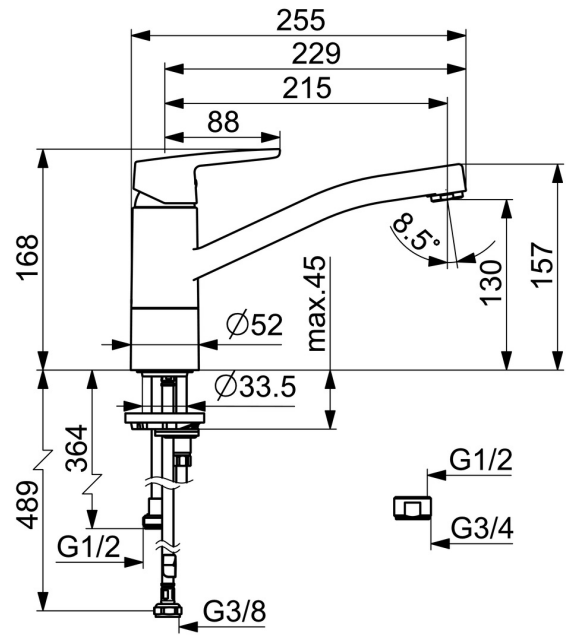
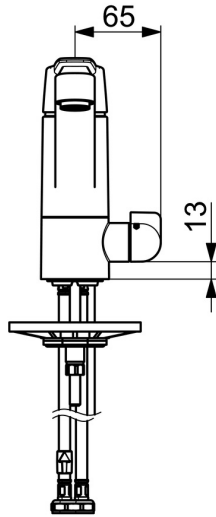
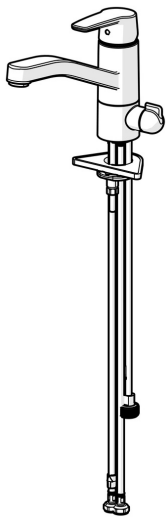


EAN: 4057304002908
static.hansa.com/52662293



- Kitchen
- Single-lever, Dishwasher valve
- Deck mounted
- Chrome
- Swivel spout, Swivel range limiting option
- Standard aerator
- Mechanic stop valve for external equipment
- Hot/Cold symbols, Single operating lever/handle
- Limitation option for maximum temperature and flow-rate, Adjustable hot water stop (included, retrofittable)
- \varnothing 35 mm ceramic cartridge for flow and temperature control
- Flexible inlet pipes
- Inner body made of DZR brass, Rapid installation system



Technical data

Flow properties

Flow-rate at 3 bar **12.0 l/min**

Technical properties

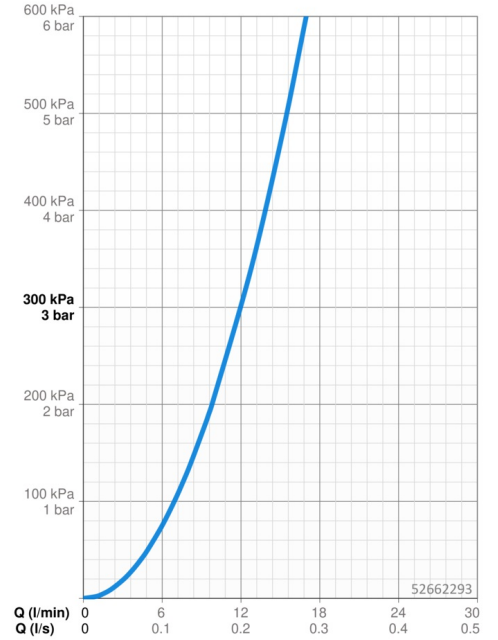
DN-size (nominal dimension) **DN15**
 Hot water supply **max. +70°C**
 Working pressure **0.5-10 bar**
 Connection size **G3/8**
 Projection **215 mm**
 Backflow prevention (EN1717) **AA**
 Material **Brass**

Regulations

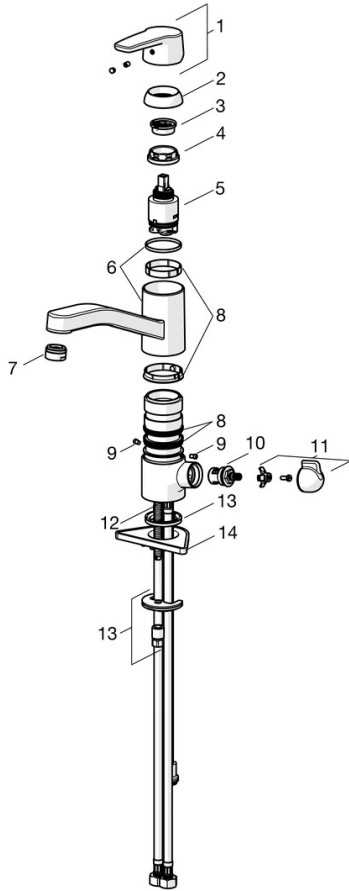
EN standard **EN 817**
 Noise class **I (ISO 3822)**

Approvals and Declarations

Declaration of conformity **DoC**
 EPD **S-P-06396**

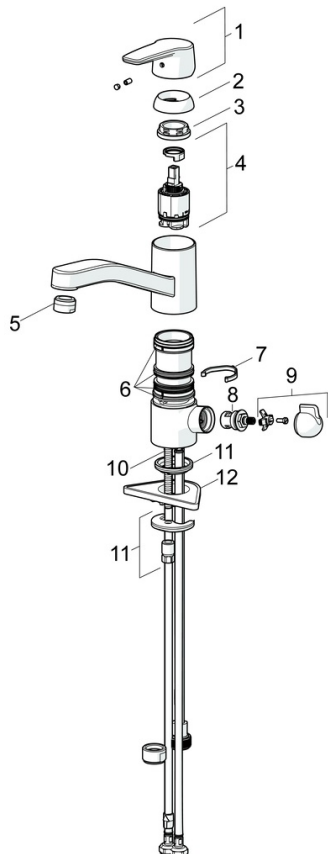


Spare parts



SP52662293

	Name	Code
01	Lever	59914417
02	Covering cap, 33x3 mm	59912504
03	Temperature adjustment limiter	59912325
04	Tightening nut, M37x1, AF30 Discontinued	59912111
05	Cartridge, 3.5 Classic	59913075
06	Spout Discontinued	59914432
07	Aerator, M24x1 STD HC A	59902366
08	Sealing kit	1001264V
08	Sealing kit Discontinued	59913968
09	Spout overturning stopper Discontinued	59914437
10	Headpart, G1/2	59914433
11	Handle for washing machine valve Discontinued	59914715
12	Fixing screw, M8x1, L=140	59912474
13	Fixing set	59910749
14	Supporting plate	59910008



SP52662293(2020)

	Name	Code
01	Lever	59914417
02	Covering cap, 33x3 mm	59912504
03	Tightening nut, M37x1, SW30	1005680V
04	Cartridge, 3.5 Classic	59913075
05	Aerator, M24x1 STD HC A	59902366
06	Sealing kit	1001264V
07	Spout overturning stopper, 120°	59914489
08	Headpart, G1/2	59914433
09	Handle for washing machine valve Discontinued	59914715
10	Fixing screw, M8x1, L=140	59912474
11	Fixing set	59910749
12	Supporting plate	59910008