

Technical data

Flow properties

Flow-rate at 3 bar (with flow controller)	6.0 l/min
Pressure loss with flow (0.1 l/s)	1 bar

Technical properties

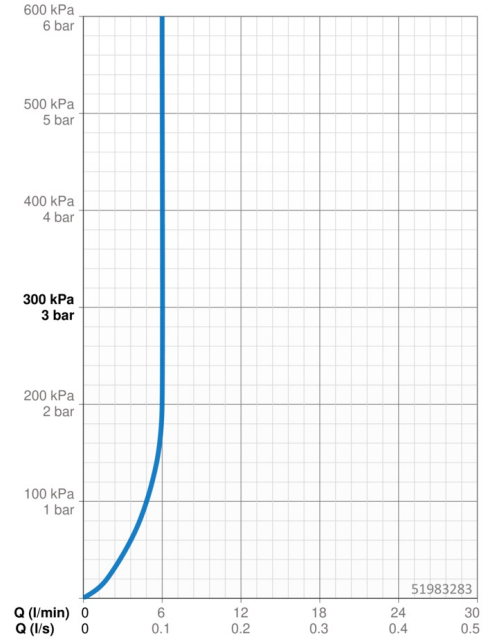
DN-size (nominal dimension)	DN15
Hot water supply	max. +70°C
Working pressure	0.5-10 bar
Connection size	G3/8
Projection	119 mm
Backflow prevention (EN1717)	AA
Material	Brass

Regulations

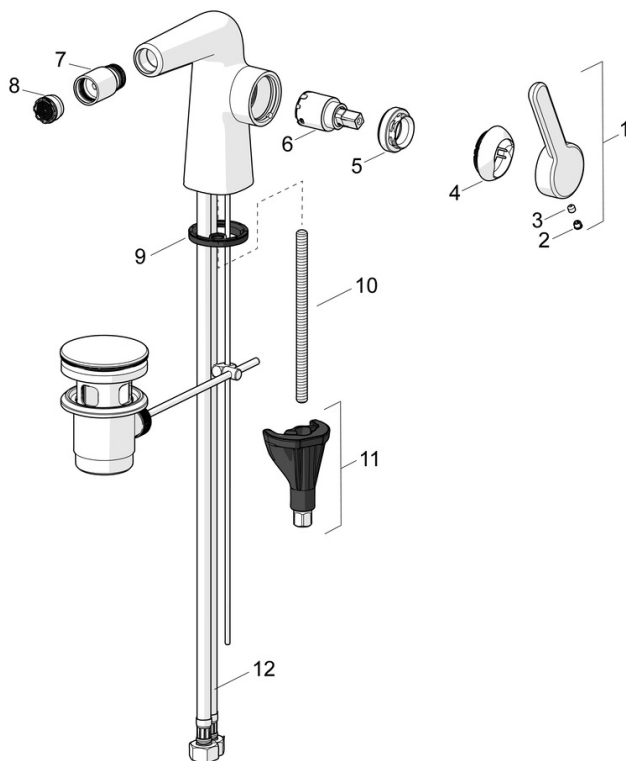
EN standard	EN 817
Noise class	I (ISO 3822)

Approvals and Declarations

DVGW	DW-6506DL0547
Declaration of conformity	DoC



Spare parts



SP51983283

	Name	Code
01	Lever Discontinued	59914640
02	Cover plug	59913762
03	Screw, M5x8, SW2.5	59904755
04	Covering cap Discontinued	59914638
05	Tightening nut, M32x1, SW24	59913958
06	Cartridge, 2.5	59913914
07	Swivel joint, M18.5x1	59913370
08	Aerator, M18.5x1, TJ	59913366
09	Bottom seal	59914591
10	Fixing screw, M8x1, L=130	59914474
11	Fixing set	59914475
12	Flexible pipe, L=500, M8x1-G3/8 LH	59914467
N.I.	Pop-up waste	59911441
N.I.	Pop-up operating rod	59913459