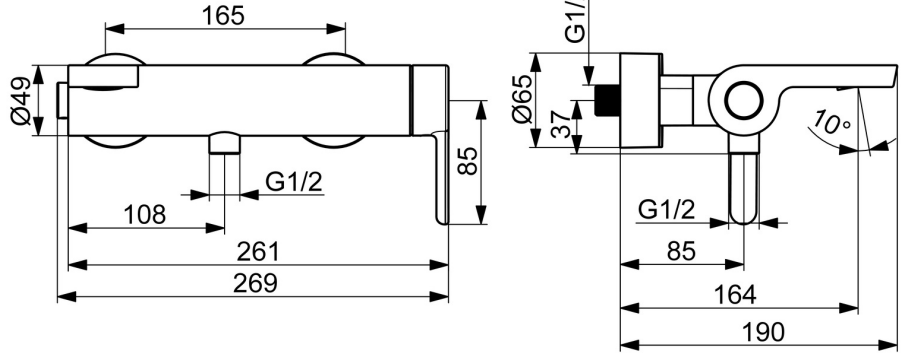
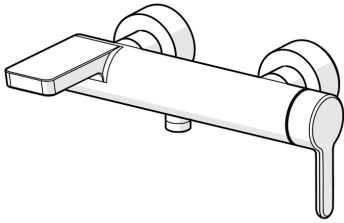


EAN: 4057304022111  
[static.hansa.com/51852193](http://static.hansa.com/51852193)



- Bathtub & Shower
- Single-lever, side operated
- Wall mounted
- Chrome
- Fixed spout
- Laminar stream
- Single operating lever/handle, Hot/Cold symbols
- Push operated diverter, Automatic reset
- Limitation option for maximum temperature and flow-rate
- $\varnothing$  40 mm ceramic cartridge for flow and temperature control, Non-return valve(s)
- Eccentric coupling(s)
- Inner body made of DZR brass



## Technical data

### Flow properties

Flow-rate at 3 bar **21.0 l/min**

### Technical properties

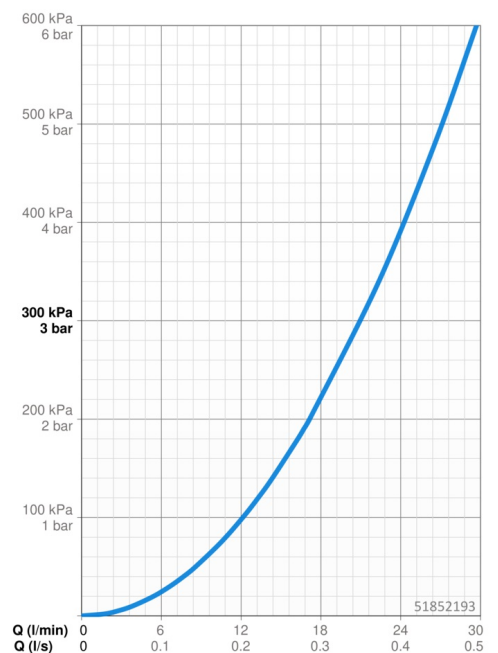
Hot water supply **max. +80°C**  
 Working pressure **0.5-10 bar**  
 Connection size **G1/2**  
 Installation width **150 ± 15 mm**  
 Backflow prevention (EN1717) **EB**  
 Material **Brass**

### Regulations

EN standard **EN 817**

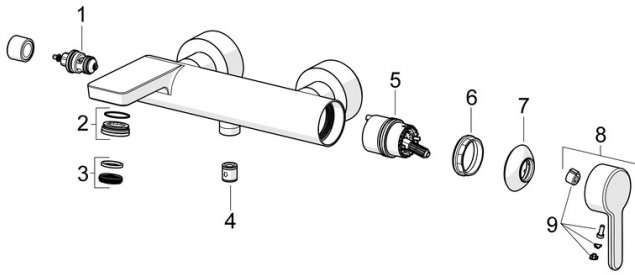
### Approvals and Declarations

Declaration of conformity **DoC**  
 EPD **S-P-06397**



## Spare parts

### SP51852193



	<b>Name</b>	<b>Code</b>
01	Diverter	59912870
02	Fitting ring for aerator, M24x1, SW17, (2019-)	59914744
03	Aerator, M24x1	59913132
04	Non-return valve	59905714
05	Cartridge	59914665
06	Tightening nut, M42x1.5, SW 38	59914128
07	Covering cap	59914649
08	Lever	59914574
09	Symbol plug	59914573