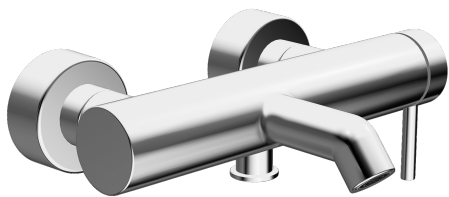
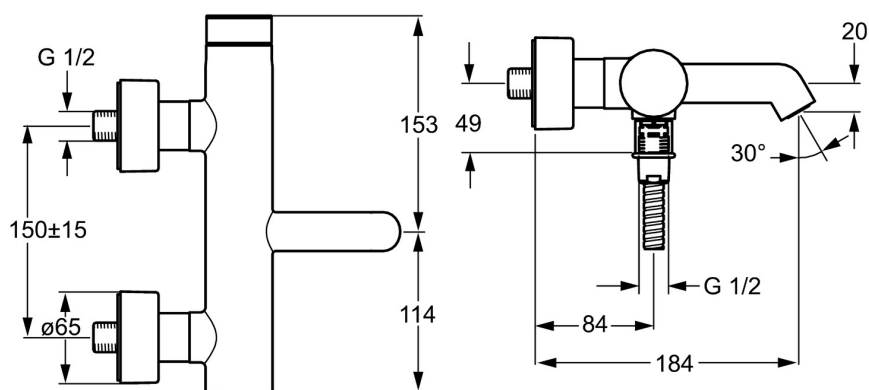
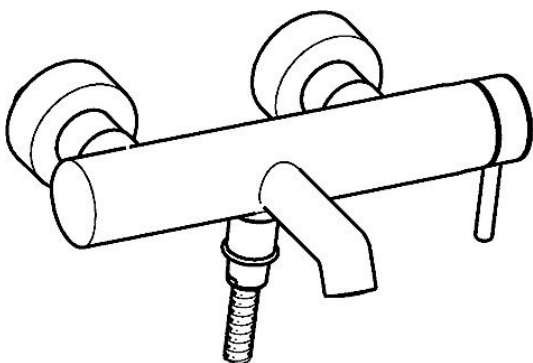


EAN: 4015474172937
static.hansa.com/51852173



- Bathtub & Shower
- Single-lever, side operated
- Wall mounted
- Chrome
- Hidden aerator, Standard aerator
- Pin shape, Single operating lever/handle, Hot/Cold symbols
- Pull operated diverter, Automatic reset
- Limitation option for maximum temperature and flow-rate, Adjustable hot water stop (included, retrofittable)
- Non-return valve(s), \varnothing 35 mm ceramic cartridge for flow and temperature control
- Eccentric coupling(s), Cover plate(s), Silencer(s)
- Inner body made of DZR brass
- protected against back-flow in domestic use (according to DIN EN 1717)



Technical data

Flow properties

Flow-rate at 3 bar

20.4 / 16.2 l/min

Technical properties

DN-size (nominal dimension)

DN15

Hot water supply

max. +80°C

Working pressure

0.5-10 bar

Connection size

G1/2

Installation width

150 ± 15 mm

Projection

184 mm

Backflow prevention (EN1717)

EB

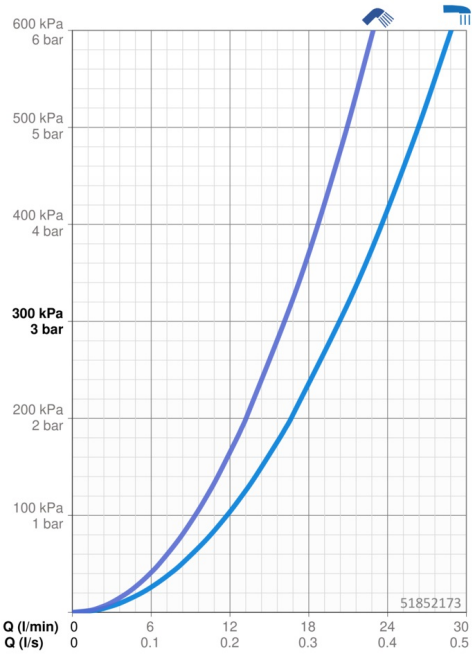
Material

Brass

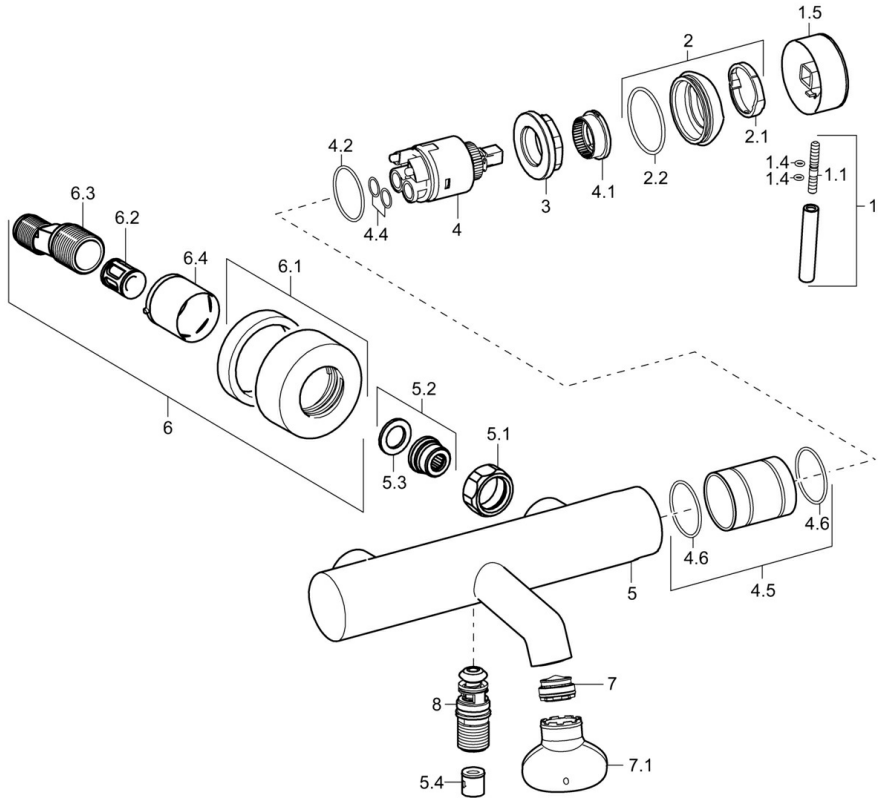
Regulations

EN standard

EN 817



Spare parts



SP51852173

	Name	Code
1	Lever, L=50, M5 IG	59913335
1.1	Screw, M5x35	59913299
1.4	O-ring, d 3x1.5	59913100
1.5	Cap	59913332
1.5	Cap White Discontinued	59913334
1.5	Cap Black Discontinued	59913333
2	Covering cap	59913364
2.1	Bearing ring	59913363
2.2	O-ring, d 38x2	59913212
3	Screw, M42x1, SW34	59913365
4	Cartridge, 3.5 Eco	59912324
4	Cartridge, 3.5 Classic	59913075
4.1	Temperature adjustment limiter	59912325
4.2	O-ring, d 28.24x2.62 Discontinued	59912590
4.4	O-ring, d 10.10x1.60 Discontinued	59905072
4.5	Collar Discontinued	59913433
4.6		
5.1	Connection nut, G3/4, AF30	59902230
5.2	Seat, G1/2, L, WAF10	59904618
5.3	Retaining ring, 23.9x15.2x2	59902689
5.4	Non-return valve	59905714
6.1	Cover flange	59913432
6.2	Silencer	59904792
6.3	Eccentric connector, G3/4xG1/2, DN15	59910254
6.4	Cover sleeve	59912651
7	Aerator, M24x1 C	59913131
7.1	Key for aerator, M24x1	59913134
8	Diverter	59913101
N.I.	Key, SW30/34	59912108