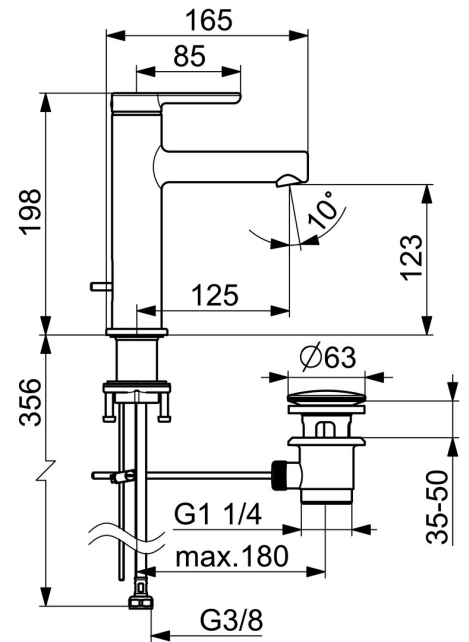
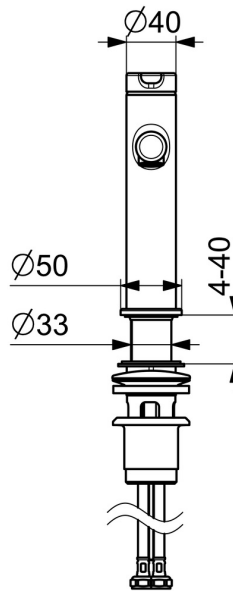
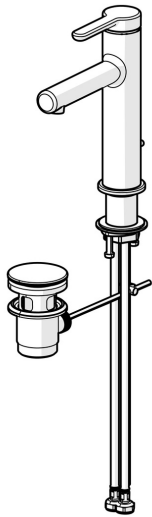


EAN: 4057304015106  
[static.hansa.com/51832293](http://static.hansa.com/51832293)



- Washbasin
- Single-lever
- Deck mounted
- Chrome
- Fixed spout
- PCA® - constant flow rate regardless of pressure variations
- Single operating lever/handle, Hot/Cold symbols
- Pop-up waste with draw-rod
- $\varnothing$  25 mm ceramic cartridge for flow and temperature control
- Flexible inlet pipes
- Inner body made of DZR brass



## Technical data

### Flow properties

Flow-rate at 3 bar (with flow controller) **6.0 l/min**

### Technical properties

DN-size (nominal dimension) **DN15**  
 Hot water supply **max. +70°C**  
 Working pressure **0.5-10 bar**  
 Connection size **G3/8**  
 Projection **125 mm**  
 Backflow prevention (EN1717) **AA**  
 Material **Brass**

### Regulations

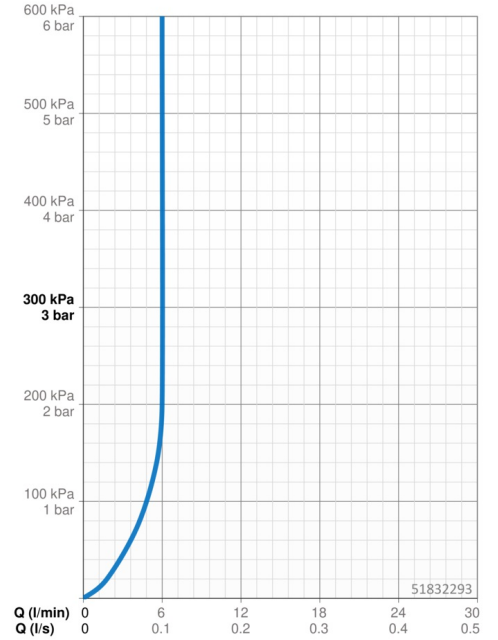
EN standard **EN 817**  
 Noise class **I (ISO 3822)**

### Approvals and Declarations

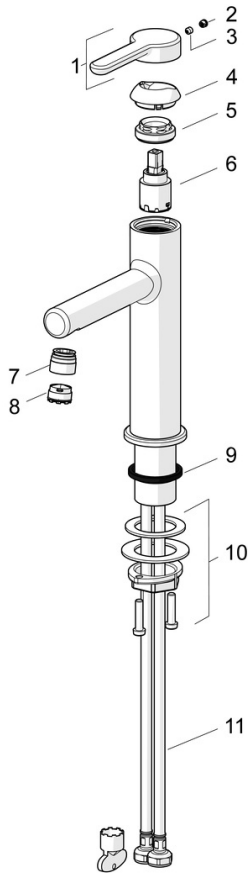
DVGW **DW-6506DL0547**  
 Declaration of conformity **DoC**  
 EPD **S-P-06391**

### Sustainability

EPD module A1 (kg CO2 eq.) **9,47**  
 EPD module A2 (kg CO2 eq.) **0,45**  
 EPD module A3 (kg CO2 eq.) **0,90**  
 EPD module A1-A3 (kg CO2 eq.) **10,82**  
 EPD module A4 (kg CO2 eq.) **0,30**  
 EPD module B7 (kg CO2 eq.) **1854,00**  
 EPD module C2 (kg CO2 eq.) **0,02**  
 EPD module C3 (kg CO2 eq.) **0,02**  
 EPD module C4 (kg CO2 eq.) **0,08**  
 EPD module D (kg CO2 eq.) **-7,70**



## Spare parts



### SP51882293

	Name	Code
01	Lever Discontinued	59914637
02	Cover plug	59913762
03	Screw, M5x8, SW2.5	59904755
04	Covering cap Discontinued	59914638
05	Tightening nut, M32x1, SW24	59913958
06	Cartridge, 2.5	59913914
07	Fitting ring for aerator	59914645
08	Aerator, M18.5x1, TJ	59913366
09	Bottom seal	59914650
10	Fixing set	59913371
11	Flexible pipe, L=475, G3/8-M10x1 LH Discontinued	59914468