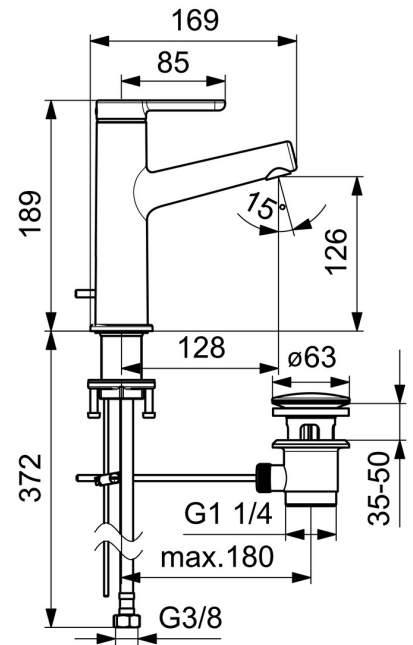
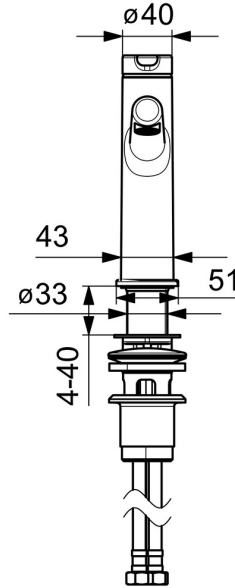
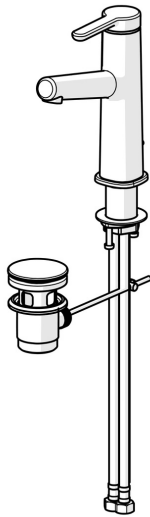


EAN: 4057304006449
static.hansa.com/51832283



one-hole single-lever basin mixer, DN 15

- Washbasin
- Single-lever
- Deck mounted
- Chrome
- Fixed spout
- PCA® - constant flow rate regardless of pressure variations, Hidden aerator
- Hot/Cold symbols, Single operating lever/handle
- Pop-up waste with draw-rod
- \varnothing 25 mm ceramic cartridge for flow and temperature control
- Flexible inlet pipes
- Inner body made of DZR brass



Technical data

Flow properties

| | |
|---|------------------|
| Flow-rate at 3 bar (with flow controller) | 6.0 l/min |
| Pressure loss with flow (0.1 l/s) | 2 bar |

Technical properties

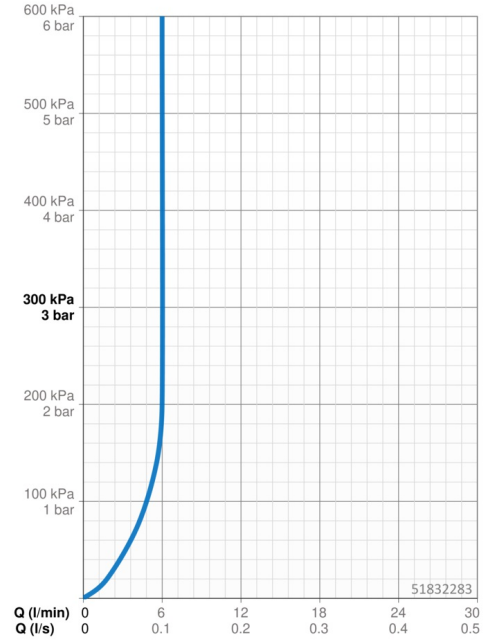
| | |
|------------------------------|-------------------|
| DN-size (nominal dimension) | DN15 |
| Hot water supply | max. +70°C |
| Working pressure | 0.5-10 bar |
| Connection size | G3/8 |
| Projection | 128 mm |
| Backflow prevention (EN1717) | AA |
| Material | Brass |

Regulations

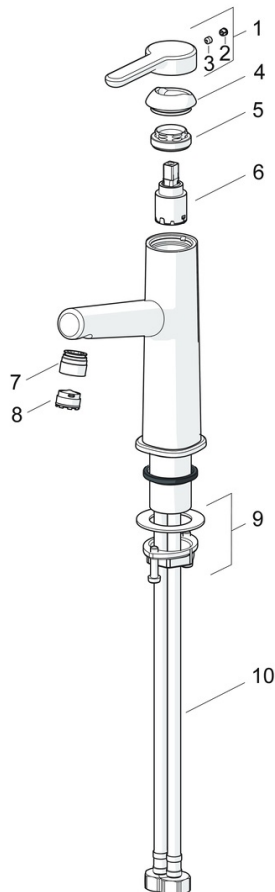
| | |
|-------------|---------------------|
| EN standard | EN 817 |
| Noise class | I (ISO 3822) |

Approvals and Declarations

| | |
|---------------------------|----------------------|
| DVGW | DW-6506DL0547 |
| Declaration of conformity | DoC |
| EPD | S-P-06391 |



Spare parts



SP51882283

| | Name | Code |
|------|---|----------|
| 01 | Lever Discontinued | 59914637 |
| 02 | Cover plug | 59913762 |
| 03 | Screw, M5x8, SW2.5 | 59904755 |
| 04 | Covering cap Discontinued | 59914638 |
| 05 | Tightening nut, M32x1, SW24 | 59913958 |
| 06 | Cartridge, 2.5 | 59913914 |
| 07 | Fitting ring for aerator | 59914645 |
| 08 | Aerator, M18.5x1, TJ | 59913366 |
| 09 | Fixing set | 59913371 |
| 10 | Flexible pipe, L=475, G3/8-M10x1 LH Discontinued | 59914468 |
| 10 | Flexible pipe, L=470, G1/2-M10x1 LH (518822830037) Discontinued | 59914639 |
| N.I. | Pop-up operating rod | 59913459 |
| N.I. | Pop-up waste | 59911441 |