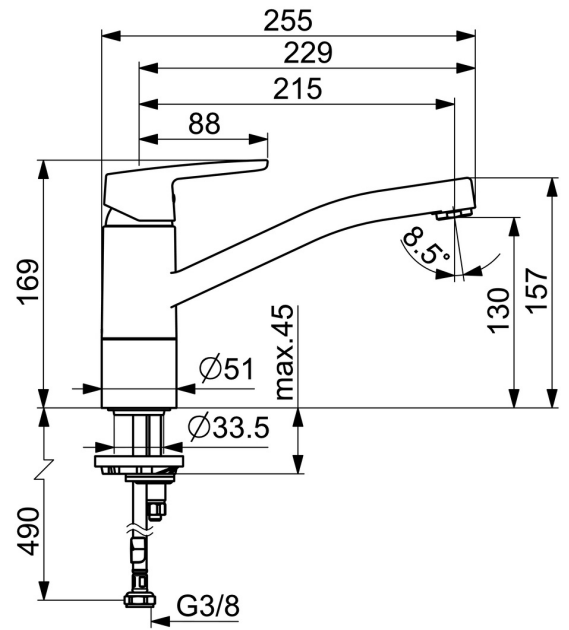
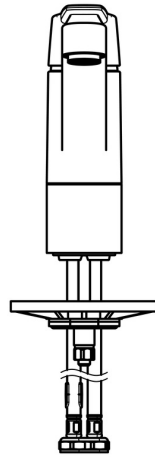
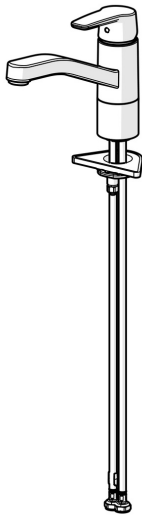


EAN: 4057304002885
static.hansa.com/5148229300676



- Kitchen
- Single-lever, Cold Start
- Deck mounted
- Chrome
- Swivel spout, Swivel range limiting option
- Standard aerator
- Hot/Cold symbols, Single operating lever/handle
- Limitation option for maximum temperature and flow-rate, Energy saving variation (Cold Start) - cold water in the middle position, Adjustable hot water stop (included, retrofittable)
- \varnothing 35 mm ceramic eco cartridge for flow and temperature control
- Flexible inlet pipes
- Inner body made of DZR brass, Rapid installation system



Technical data

Flow properties

Eco-flow at 3 bar	4.8 l/min
Flow-rate at 3 bar	12.0 l/min

Technical properties

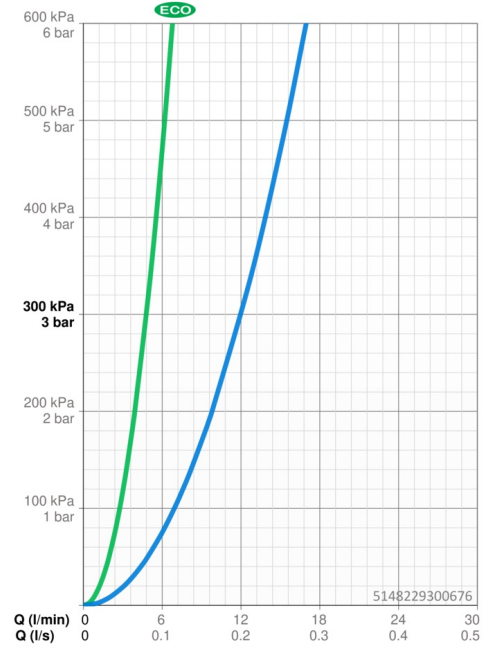
DN-size (nominal dimension)	DN15
Hot water supply	max. +70°C
Working pressure	0.5-10 bar
Connection size	G3/8
Projection	215 mm
Backflow prevention (EN1717)	AA
Material	Brass

Regulations

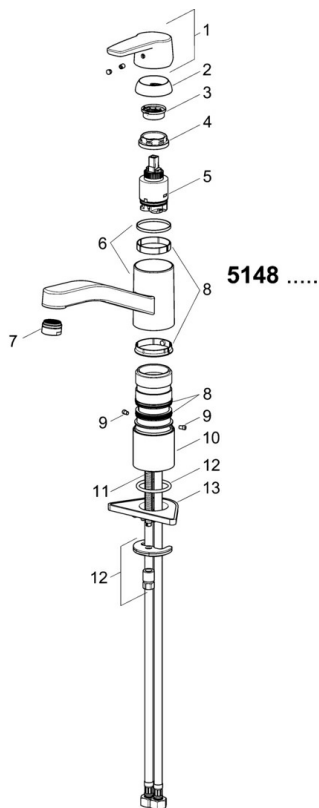
EN standard	EN 817
Noise class	I (ISO 3822)

Approvals and Declarations

Declaration of conformity	DoC
EPD	S-P-06396



Spare parts



SP5148229300676

	Name	Code
01	Lever Discontinued	59914525
04	Tightening nut, M37x1, AF30 Discontinued	59912111
05	Cartridge, 3.5 cold start	59913953
06	Spout Discontinued	59914432
07	Aerator, M24x1 STD HC A	59914484
08	Sealing kit	1001264V
08	Sealing kit Discontinued	59913968
09	Spout overturning stopper Discontinued	59914437
10	Raising socket	59913973
11	Fixing screw, M8x1, L=140	59912474
12	Fixing set	59910749
13	Supporting plate	59910008
N.I.	Flexible pipe, L=500, M8x1-G3/8 LH	59914467

SP5148229300676(2020)

	Name	Code
01	Lever Discontinued	59914564
02	Covering cap, 33x3 mm	59912504
03	Tightening nut, M37x1, SW30	1005680V
04	Cartridge, 3.5 cold start	59913953
05	Aerator, M24x1 STD HC A	59902366
06	Sealing kit	1001264V
07	Spout overturning stopper, 120°	59914489
08	Fixing screw, M8x1, L=140	59912474
09	Fixing set	59910749
10	Supporting plate	59910008