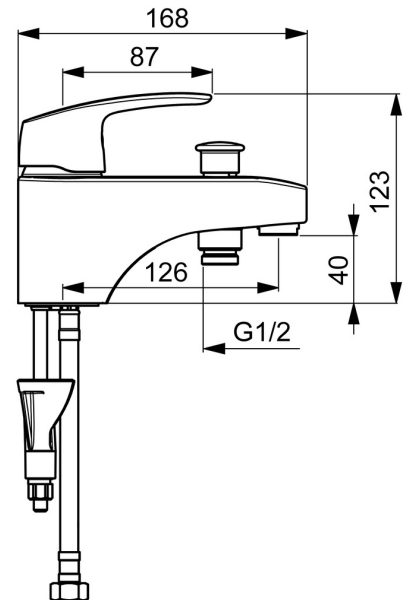
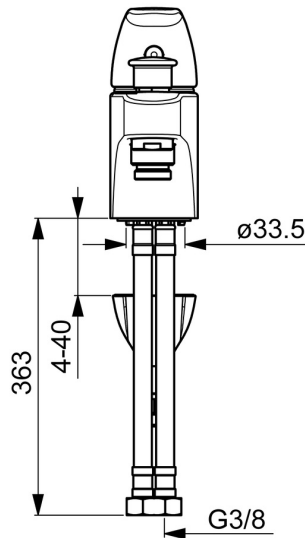
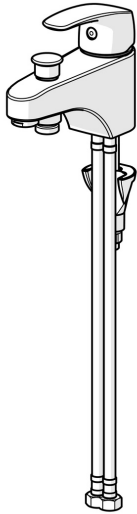


EAN: 4057304003790
static.hansa.com/45372283



- Bathtub & Shower
 - Single-lever
 - Rim mounted
 - Chrome
 - Standard aerator
- Hot/Cold symbols, Single operating lever/handle
 - Pull operated diverter, Automatic reset
 - Limitation option for maximum temperature and flow-rate, Adjustable hot water stop (included, retrofittable)
 - Non-return valve(s), \varnothing 40 mm ceramic cartridge for flow and temperature control
 - 3S-installation system for safe and simple mounting, Inner body made of DZR brass



Technical data

Flow properties

Flow-rate at 3 bar **20.4 / 19.2 l/min**

Technical properties

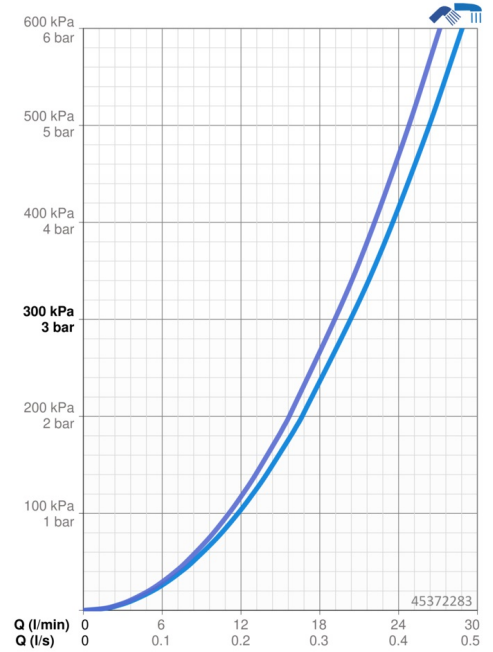
DN-size (nominal dimension) **DN15**
 Hot water supply **max. +80°C**
 Working pressure **0.5-10 bar**
 Projection **125 mm**
 Backflow prevention (EN1717) **EB**

Regulations

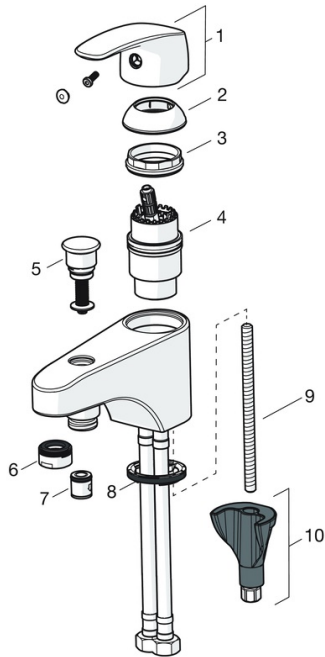
EN standard **EN 817**

Approvals and Declarations

Declaration of conformity **DoC**



Spare parts



SP45372283

	Name	Code
01	Lever	59914453
02	Covering cap Discontinued	59914454
03	Tightening nut, M42x1.5, SW 38	59914128
04	Cartridge, 4.0 Classic	59914129
05	Diverter	59914487
06	Aerator, M24x1 C uk Discontinued	59914488
07	Non-return valve, DN15	59914250
08	Bottom seal	59914591
09	Fixing screw, M8x1, L=130	59914474
10	Fixing set	59914475