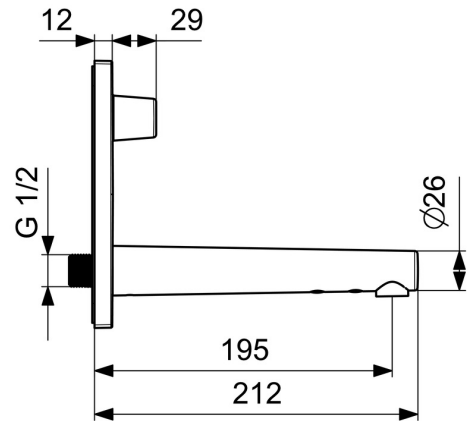
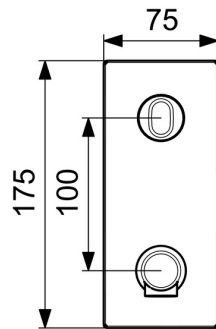
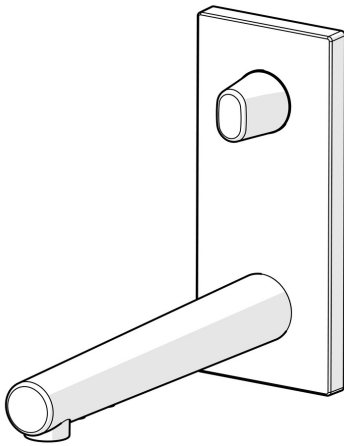


EAN: 4015474277892  
[static.hansa.com/44912010](https://static.hansa.com/44912010)



- Washbasin
- Trim Kit, Touchless, External transformer
- Concealed wall mounting
- Chrome
- Fixed spout
- Hidden aerator
- Temperature control handle
- External control unit, Infrared sensor
- Software settings adjustable via magnetic key
- Square rosette



## Technical data

### Flow properties

Flow-rate at 3 bar	<b>6.6 l/min</b>
Pressure loss with flow (0.1 l/s)	<b>2.5 bar</b>

### Technical properties

Hot water supply	<b>max. +70°C</b>
Working pressure	<b>1-10 bar</b>
Connection size	<b>G3/8</b>
Projection	<b>195 mm</b>
Material	<b>Brass</b>

### Software settings

Afterflow period	<b>2 s ± 1 s (1/2/3/4/8 s)</b>
Automatic flush	<b>off (off/12/24/48/72 h)</b>
Automatic flush period	<b>30 s (10/30/60/120/180/240/300/600 s)</b>
Max. flow period	<b>120 s (10/30/60/120/300 s)</b>

### Electronic properties

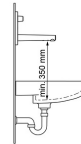
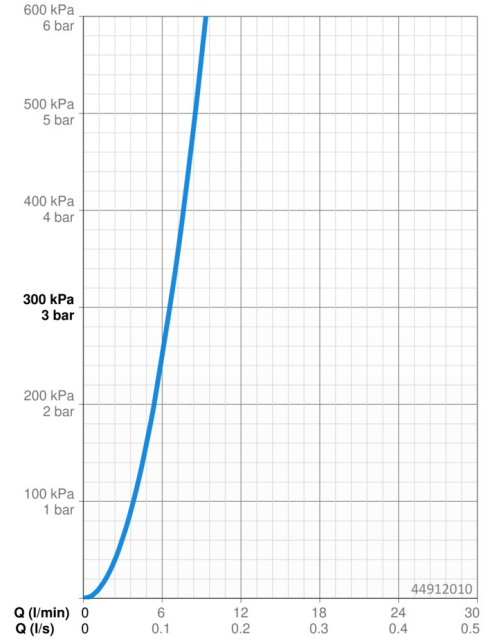
Electrical Connection	<b>230 / 12 V</b>
-----------------------	-------------------

### Regulations

EU Directives	<b>C € Low Voltage Directive 2014/35/EU , EMC Directive 2014/30/EU , RoHS Directive 2011/65/EU</b>
EN standard	<b>EN 15091, ETSI EN 301 489-1 V1.9.2 , ETSI EN 300 328 v2.2.2 , EN 61000-6-1:2007 , EN 61000-6-3:2007+A1:2011+AC:2012 , EN 60335-1:2012+A11+A13+A1+A14+A2+A15:2021, Part 19.11.4</b>
Protection class	<b>IP 55 / transformer IP 40</b>

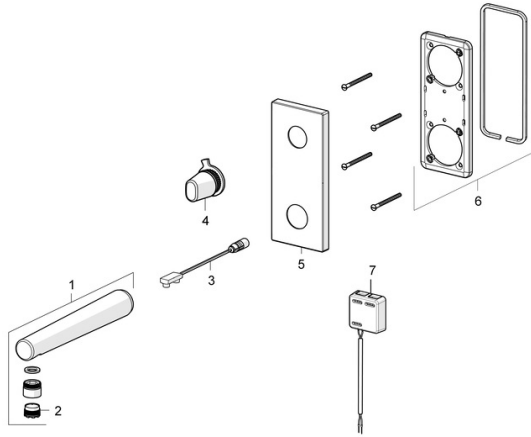
### Approvals and Declarations

Declaration of conformity	<b>LVD</b>
---------------------------	------------



## Spare parts

### SP44912010



	Name	Code
1	Spout, 44922010	59914519
1	Spout, 44912010	59914355
2	Aerator and key, M18.5x1 Z	59914102
3	Sensor, 6 V	59914356
4	Temperature control handle	59914357
5	Cover plate	59914358
6	Cover plate holder	59913697
7	Control unit, 12 V	59914359