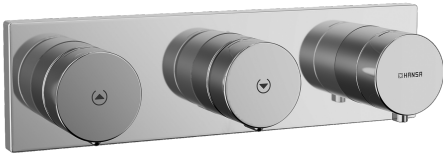
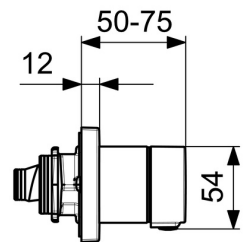
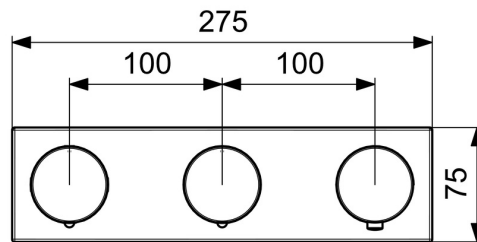
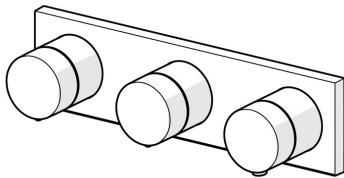


EAN: 4015474277915  
[static.hansa.com/44729503](https://static.hansa.com/44729503)



- Bathtub & Shower
- Trim Kit, Tiptronic, External transformer
- Concealed wall mounting
- Chrome
- Temperature control handle, Flow control handle
- Press pad with EcoLed, Separate electronic press pad
- Safety stop against scalding at 38°C
- External control unit, Power supply
- Rosette plate frame, Square rosette, Sleeve, BLUECLICK for an easy, screwless trim plate installation
- Filling time: 10 min (0 - 20 min)



## Technical data

### Technical properties

DN-size (nominal dimension)	DN15
Hot water supply	max. +70°C
Working pressure	1-10 bar
Material	Brass

### Software settings

Max. flow period	8 min
------------------	-------

### Electronic properties

Electrical Connection	230 / 12 V
-----------------------	------------

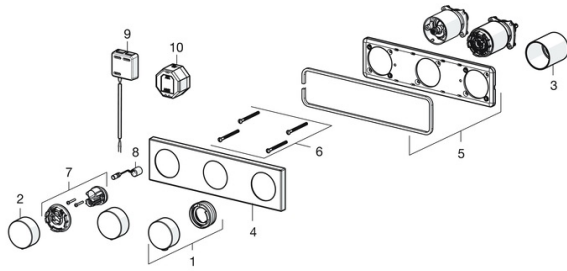
### Regulations

EU Directives	C € Low Voltage Directive 2014/35/EU, EMC Directive 2014/30/EU, RoHS Directive 2011/65/EU
EN standard	EN 15091, ETSI EN 301 489-1 V1.9.2, ETSI EN 300 328 v2.2.2, EN 61000-6-1:2007, EN 61000-6-3:2007+A1:2011+AC:2012, EN 60335-1:2012+A11+A13+A1+A14+A2+A15:2021, Part 19.11.4
Protection class	IP 55 / transformer IP 40

### Approvals and Declarations

Declaration of conformity	LVD
---------------------------	-----

## Spare parts



### SP44729503

	<b>Name</b>	<b>Code</b>
1	Temperature control handle	59914360
2	Flow control handle	59914361
3	Bushing	59914362
4	Cover plate Discontinued	59914363
5	Cover plate holder Discontinued	59914364
6	Screw, M4x55	59913698
7	Control unit, 3 V	59914365
8	Solenoid valve	59914366
9	Control unit, 12 V	59914359
10	Transformer, 230/12 VDC 1A	64990100
N.I.	Temperature adjustment limiter	59914426
N.I.	Raising kit	59914368