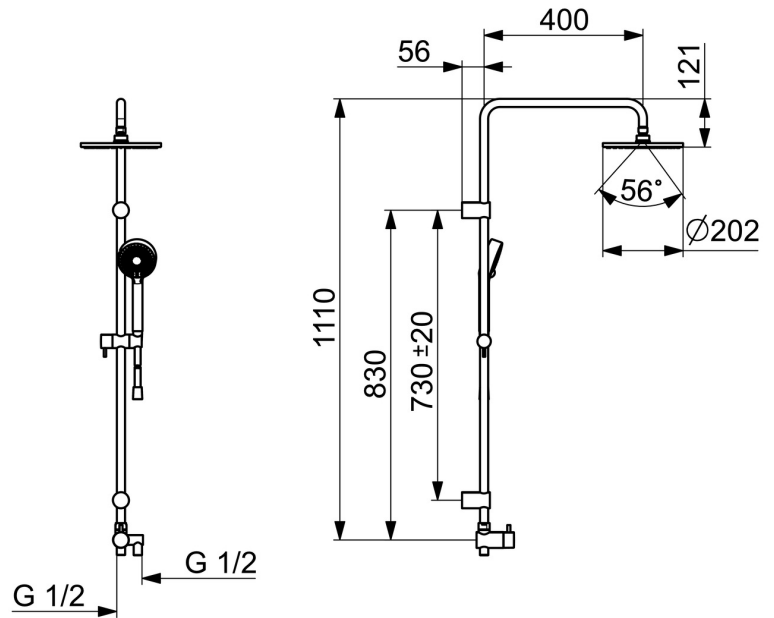
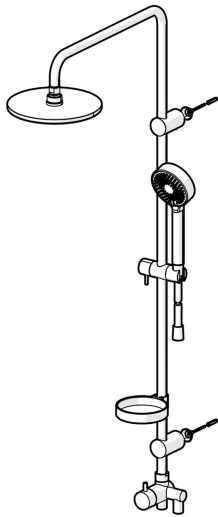


EAN: 4015474239012
static.hansa.com/44180200



- Shower solutions
- Wall mounted
- Chrome
- Turn operated diverter
- Hand shower, Shower rail, Overhead shower, Adjustable shower rail bracket, Shower hose (1250 mm)
- Normal - Even and soft water stream, Intense - invigorating water stream, Rain - Even and strong water stream
- Litter filter(s), Ceramic head part for flow control, Non-return valve(s)
- Flexible inlet pipes
- Laminar spray, without air addition
- 3 spray functions



Technical data

Flow properties

Flow-rate at 3 bar	12.0 l/min
Flow-rate at 3 bar (with flow controller)	12.0 l/min

Technical properties

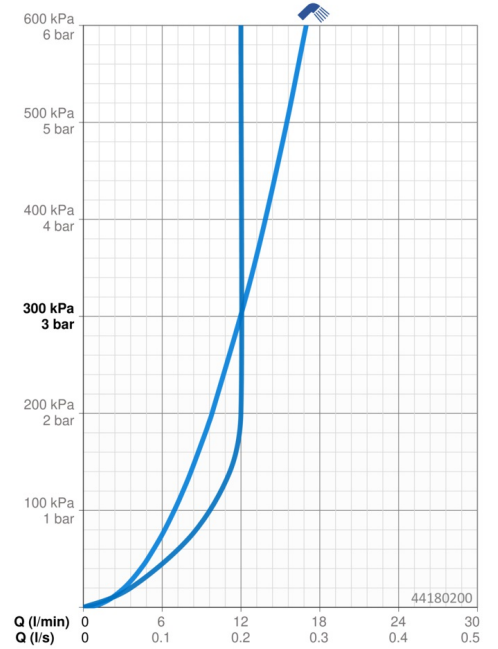
DN-size (nominal dimension)	DN15
Hot water supply	max. +70°C
Working pressure	0.5-10 bar
Connection size	G1/2
Projection	456 mm
Backflow prevention (EN1717)	EB

Regulations

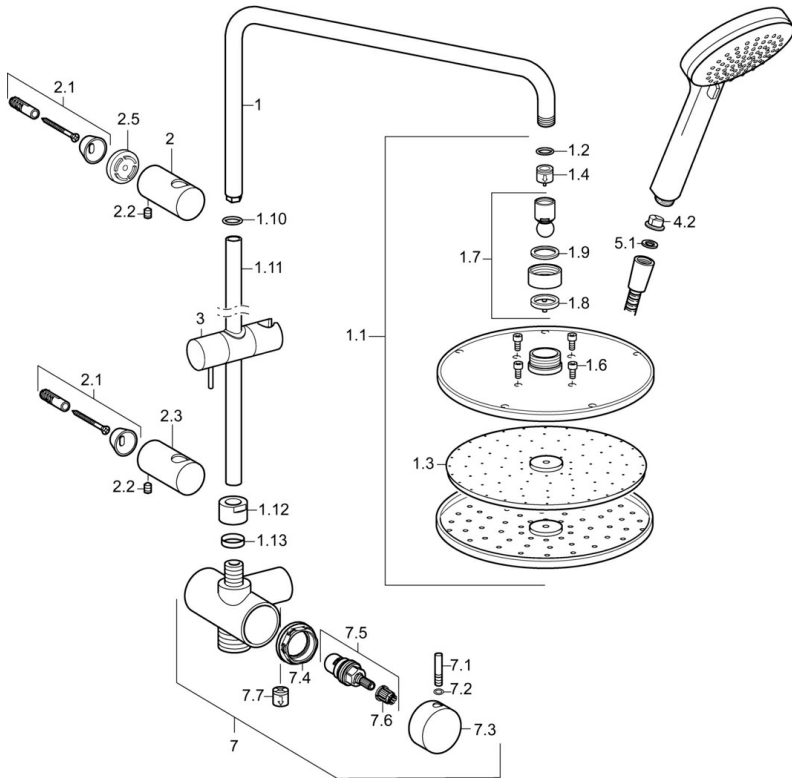
EN standard	EN 1112, EN 1113
-------------	-------------------------

Approvals and Declarations

Declaration of conformity	DoC
---------------------------	------------



Spare parts



SP44180200

	Name	Code
1	Shower pipe	59913810
1.1	Overhead shower, d 200 mm	59913747
1.3	Nozzle plate, d 200 mm, (-2019)	59913751
1.4	Flow limiter	59913753
1.6	Screw	59913754
1.10	O-ring kit	59913808
1.11	Shower pipe	59913814
1.12	Connection nut	59913807
1.13	O-ring kit	59913808
2	Wall bracket	59913809
2.1	Fixing set	59913812
2.2	Screw, M5x8, SW2.5	59904755
2.3	Wall bracket	59913815
2.5	Spacer ring, 5 mm	59913811
3	Slide for shower rail	59913755
4.2	Strainer	59906859
5.1	Gasket ring, d 21x12x2	59912304
5.2	Shower hose, L=1000, G1/2xG1/2	59913813
7	Diverter body complete	59913816
7.1	Pin, M6, 21 mm	59913284
7.2	O-ring, d 3x1.5	59913100
7.3	Handle	59913817
7.4	Tightening nut, M37x1, AF30 Discontinued	59912111
7.5	Diverter	59913818
7.6	Adapter White	59910235
7.7	Non-return valve	59905714