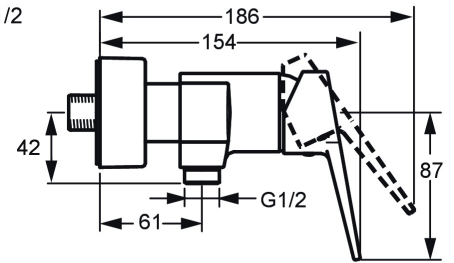
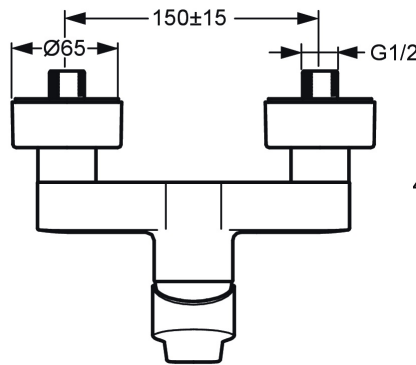
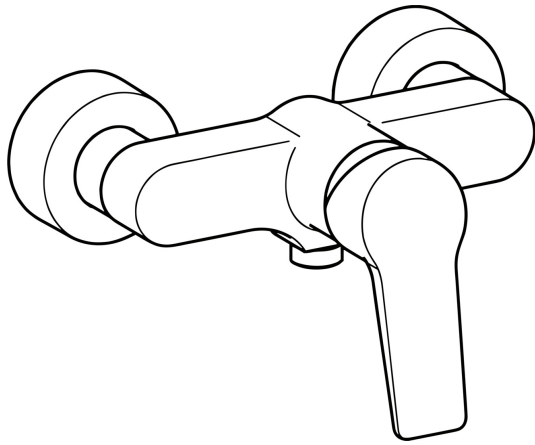


EAN: 4057304014352
static.hansa.com/0967018333



- Shower solutions
- Single-lever
- Wall mounted
- Matt black
- Hot/Cold symbols, Single operating lever/handle
- Limitation option for maximum temperature and flow-rate, Adjustable hot water stop (included, retrofittable)
- Non-return valve(s), \varnothing 35 mm ceramic cartridge for flow and temperature control
- Eccentric coupling(s), Cover plate(s), Silencer(s)
- Inner body made of DZR brass
- protected against back-flow in domestic use (according to DIN EN 1717)



Technical data

Flow properties

Flow-rate at 3 bar	16.8 l/min
Pressure loss with flow (0.2 l/s)	1.6 bar

Technical properties

DN-size (nominal dimension)	DN15
Hot water supply	max. +90°C
Working pressure	0.5-10 bar
Connection size	G3/4
Installation width	150 ± 15 mm
Backflow prevention (EN1717)	EB
Material	Brass

Regulations

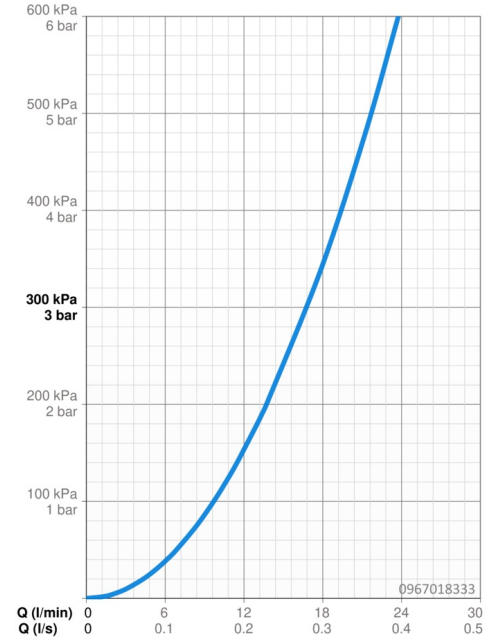
EN standard	EN 817
Noise class	I (ISO 3822)

Approvals and Declarations

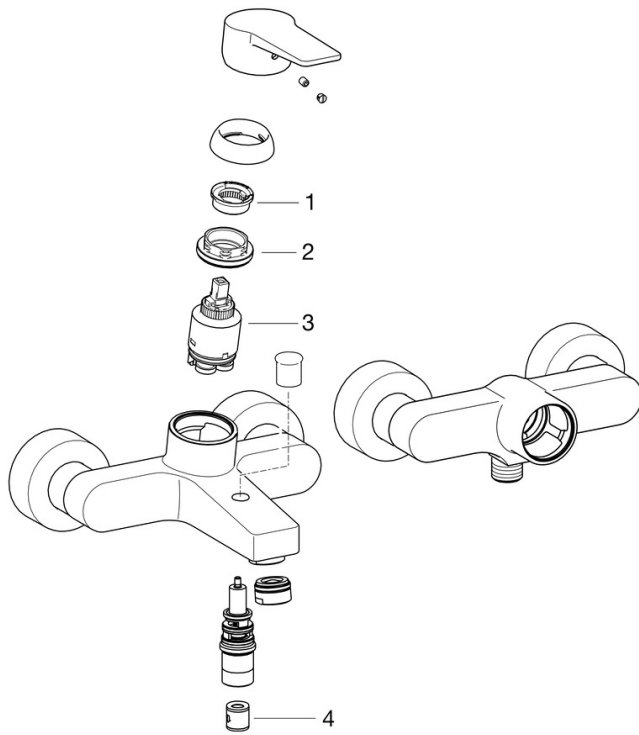
KIWA	K6116/08
DVGW	NW-6506CQ0410
ABP	PA-IX 38249/IB
Declaration of conformity	DoC
EPD	S-P-06397

Sustainability

EPD module A1 (kg CO2 eq.)	8,47
EPD module A2 (kg CO2 eq.)	0,40
EPD module A3 (kg CO2 eq.)	0,97
EPD module A1-A3 (kg CO2 eq.)	9,83
EPD module A4 (kg CO2 eq.)	0,35
EPD module B7 (kg CO2 eq.)	2954,00
EPD module C2 (kg CO2 eq.)	0,02
EPD module C3 (kg CO2 eq.)	0,02
EPD module C4 (kg CO2 eq.)	0,70
EPD module D (kg CO2 eq.)	-6,24



Spare parts



SP0967018333

	Name	Code
01	Temperature adjustment limiter	59912325
02	Tightening nut, M40x1	1003409V
03	Cartridge, 3.5 Classic	59913075
04	Non-return valve	59905714