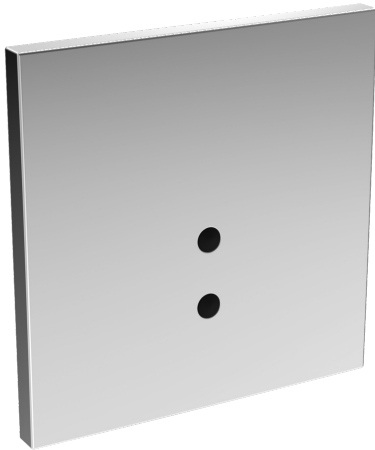
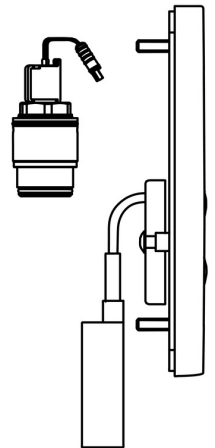
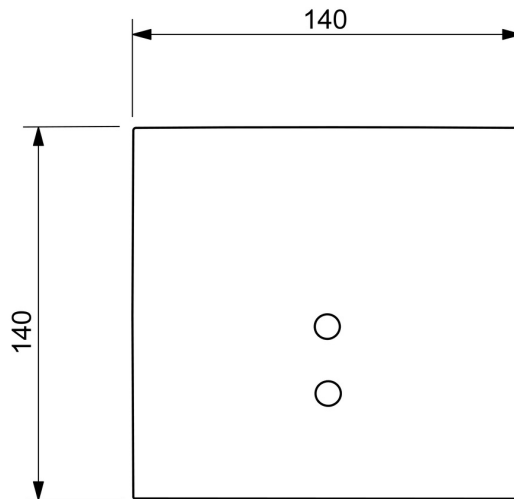
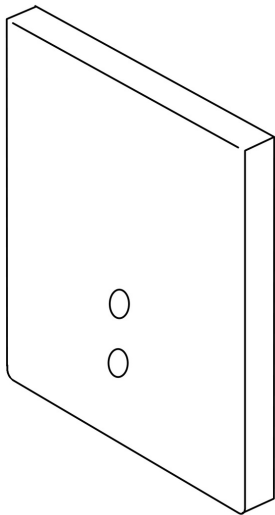


EAN: 4015474277403  
[static.hansa.com/09479272](https://static.hansa.com/09479272)



- Public & Semi-public
- Touchless, Battery-operated, Trim Kit
- Concealed wall mounting
- Chrome
- Autofocus infrared sensor, Solenoid valve, Low battery indicator
- Square rosette



## Technical data

### Flow properties

Flow-rate at 3 bar **12.0 l/min**

### Technical properties

Hot water supply **max. +70°C**  
 Working pressure **0.5-10 bar**

### Software settings

Automatic flush **24 h (off / 24h)**  
 Automatic flush period **6 s**  
 Pre-flush period **2 s (OFF / 2 s)**

### Electronic properties

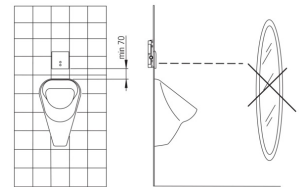
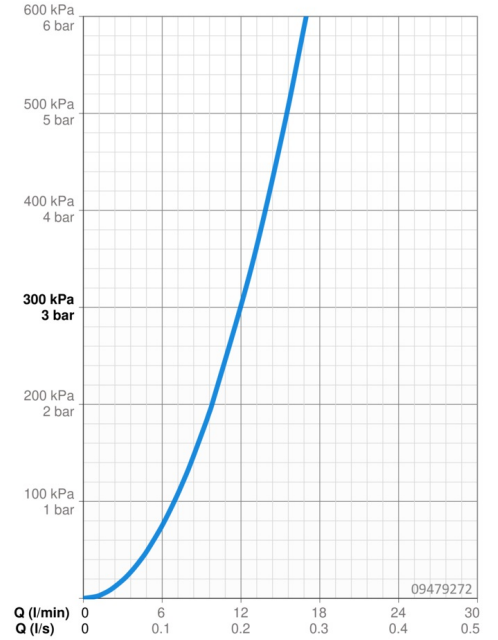
Battery **Lithium 2CR5 6 V**

### Regulations

EU Directives **CE EMC Directive 2014/30/EU, RoHS Directive 2011/65/EU**  
 EN standard **EN 15091, ETSI EN 301 489-1 V1.9.2, ETSI EN 300 328 v2.2.2, EN 61000-6-1:2007, EN 61000-6-3:2007+A1:2011+AC:2012, EN 60335-1:2012+A11+A13+A1+A14+A2+A15:2021, Part 19.11.4**  
 Protection class **IP 55**

### Approvals and Declarations

UN38.3 **UN38-3 Maxell 2CR5**  
 Declaration of conformity **EMC**

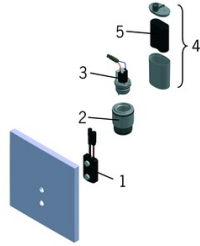


## Spare parts

---

### SP09479272

---



	<b>Name</b>	<b>Code</b>
1	Sensor, 6/9/12 V Bluetooth	1002253V
1	Sensor, 6 V, (-2020)	59914233
2	Membrane housing	59914231
3	Pilot valve, 6 V	59914232
4	Battery casing	59914154
5	Battery, 2CR5 6 V	59911670