

EAN: 4015474683471  
[static.hansa.com/08649195](https://static.hansa.com/08649195)



- Bathtub & Shower
- Thermostatic
- Concealed wall mounting
- Chrome
- Temperature control handle
- Thermostatic cartridge for automatic temperature control

## Technical data

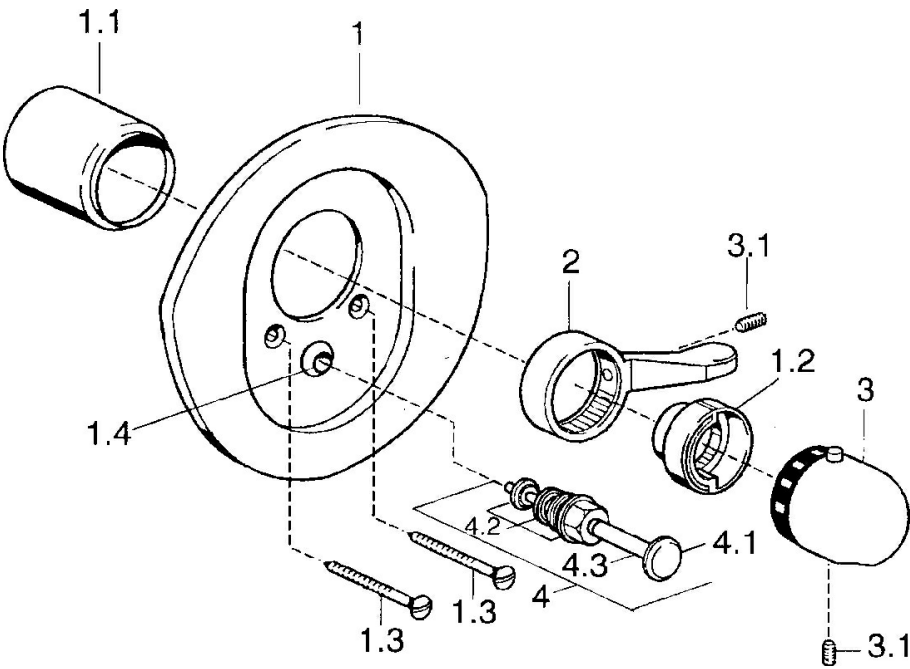
### Technical properties

Hot water supply	<b>max. +80°C</b>
Working pressure	<b>1-10 bar</b>

### Regulations

EN standard	<b>EN 1111</b>
-------------	----------------

Spare parts



SP08649195		
	Name	Code
1	Cover flange Chrome/Gold Discontinued	59911547
1	Cover flange White Discontinued	59911544
1	Cover flange Chrome/Satin Discontinued	59911543
1	Cover flange Discontinued	59911542
1.1	Covering cap Gold Discontinued	59911575
1.1	Covering cap White Discontinued	59911572
1.1	Covering cap	59911570
1.2	Temperature adjustment limiter	59906355
1.2	Temperature adjustment limiter Gold Discontinued	59905713
1.2	Temperature adjustment limiter Edelmessing Discontinued	59906926
1.3	Screw, M5x65	59904847
1.3	Screw, M5x65 Gold Discontinued	59904849
1.3	Screw, M5x65 White Discontinued	59906672
1.4	Flow limiting cap	59904846
2	Lever Chrome/Satin Discontinued	59906135
2	Lever White Discontinued	59906138
2	Lever	59905722
2	Lever Aranja Discontinued	59910312
3	Temperature control handle Chrome/Satin Discontinued	59910305
3	Temperature control handle White Discontinued	59910306
3	Temperature control handle	59910304
3.1	Screw, M6x9.5	59901609
4	Diverter Edelmessing Discontinued	59910904
4	Diverter White Discontinued	59910901
4	Diverter	59911156
4	Diverter Gold Discontinued	59906392
4.2	Sealing kit	59904791
4.3	O-ring, d 4x1	59902331
N.I.	Raising kit, 35 mm	59911438