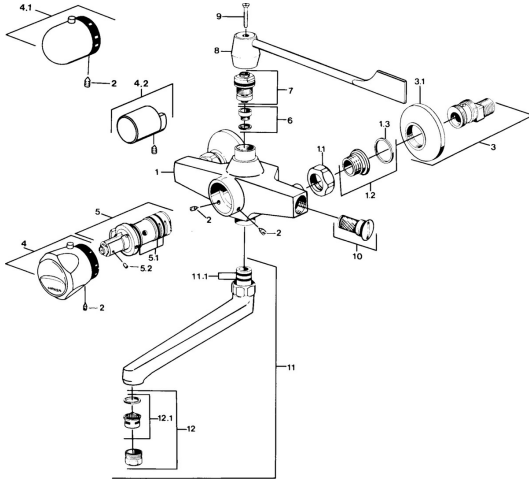


EAN: 4057304013744
static.hansa.com/08392201



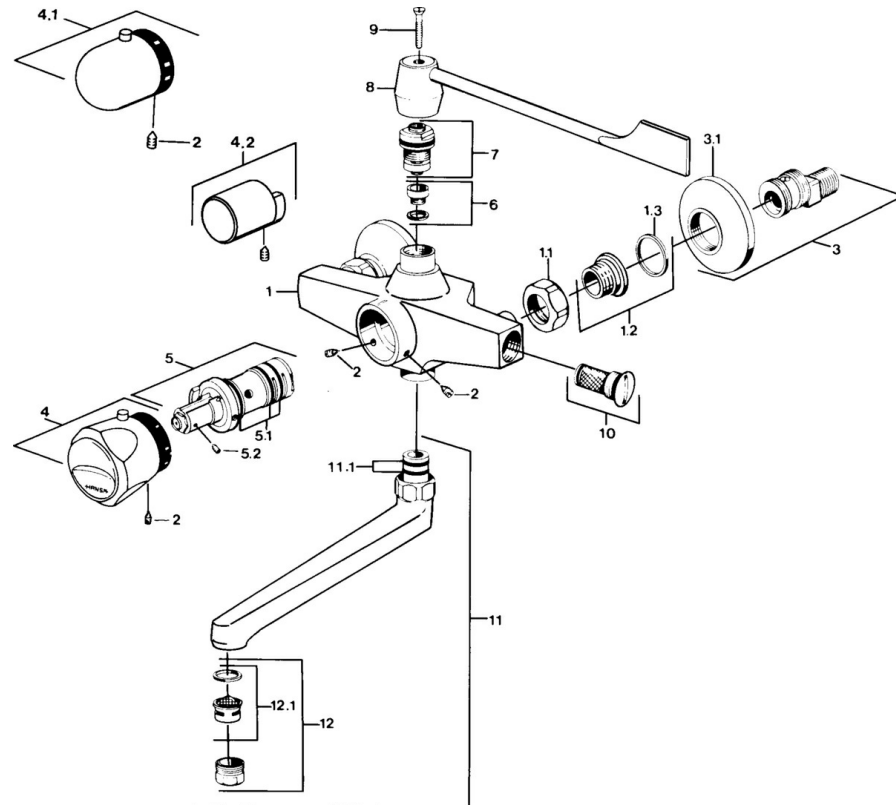
- Washbasin
- Thermostatic
- Wall mounted
- Chrome
- Temperature control handle
- Non-return valve(s)

Technical data

Technical properties

Hot water supply	max. +80°C
Working pressure	0.5-10 bar
Backflow prevention (EN1717)	EB
Material	Brass

Spare parts



SP08392201

	Name	Code
1.1	Connection nut, G3/4, AF30	59902230
1.2	Seat, G1/2, L, WAF10	59904618
1.3	Retaining ring, 23.9x15.2x2	59902689
2	Screw, M6x9.5	59901609
3	Eccentric coupling with stop valves and cover plates, G1/2xG3/4	59902034
3.1	Cover flange	59904796
4	Temperature control handle Discontinued	59906965
4.1	Temperature control handle	59910304
5	Thermostatic cartridge Discontinued	59901608
5.1	O-ring, d 27x2	59901532
5.2	Screw, M4x4	59901027
6	Seat, DN15, R1/2	59904616
7	Headpart, G1/2, DN 15	59901530
9	Screw, M5x30 Discontinued	59905011
10	Non-return valve	59901610
11	Spout Discontinued	59906467
11.1	O-ring, d 16x2	59906703
12	Aerator, M24x1 STD HC A	59902366
12.1	Aerator, M22/24 A	59902081
N.I.	Thermostatic cartridge Discontinued	59901668