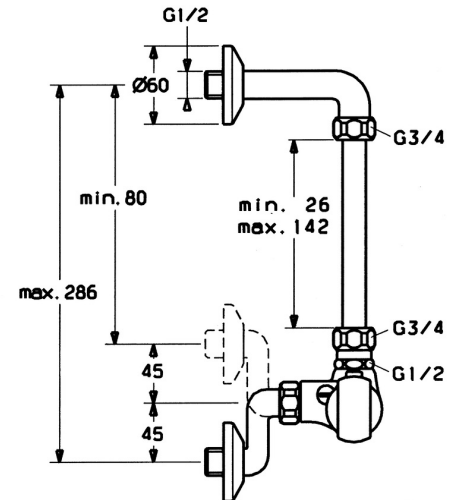
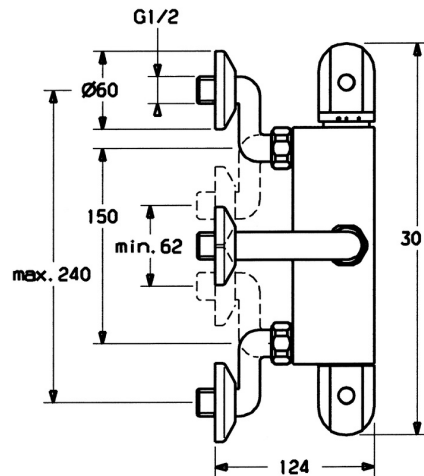
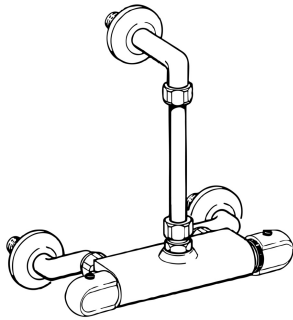


EAN: 4015474658615
static.hansa.com/08340302



- Health & Care
- Thermostatic
- Wall mounted
- Chrome
- Temperature control handle, Flow control handle
- Limitation option for maximum temperature and flow-rate, Safety stop against scalding at 38°C
- Thermostatic cartridge for automatic temperature control, Ceramic head part for flow control, Litter filter(s), Non-return valve(s)
- Eccentric coupling(s)
- Inner body made of DZR brass, Waterways without nickel coating, Thermal disinfection without cartridge readjustment



Technical data

Flow properties

Flow-rate at 3 bar **21.0 l/min**

Technical properties

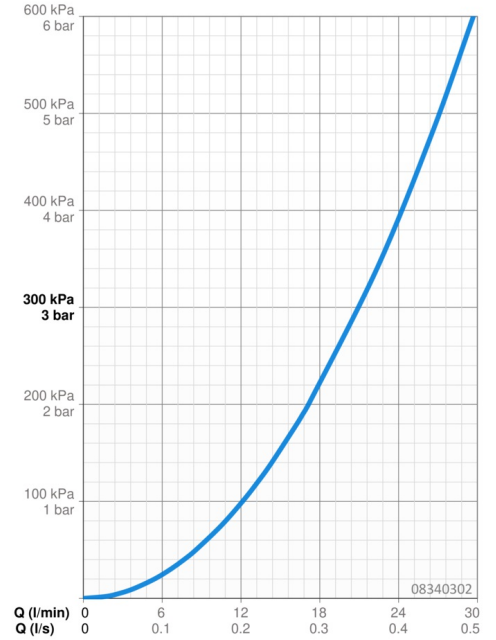
DN-size (nominal dimension) **DN15**
 Hot water supply **max. +80°C**
 Working pressure **1-10 bar**
 Connection size **G1/2**
 Installation width **cc150 ± 90 mm**
 Projection **124 mm**
 Backflow prevention (EN1717) **EB**
 Material **Brass**

Regulations

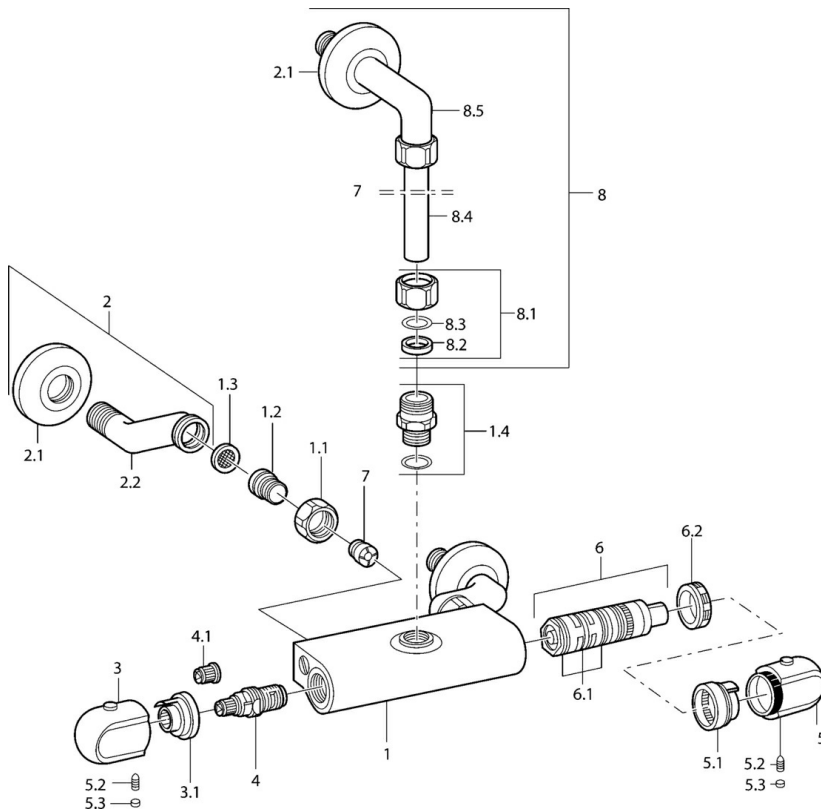
EN standard **EN 1111**

Approvals and Declarations

Declaration of conformity **DoC**



Spare parts



SP08340302

	Name	Code
1.1	Connection nut, G3/4, AF30	59902230
1.2	Nipple	59911075
1.3	Filter sealing, G3/4	59911076
1.4	Connection nipple Discontinued	59901650
2	Eccentric	59902036
3	Flow control handle	59911656
3.1	Adjusting ring	59911661
4	Headpart, G1/2, 180°	59911103
4.1	Adapter White	59910235
5	Temperature control handle, 38° limited	59911726
5	Temperature control handle	59911830
5.1	Temperature adjustment limiter	59911660
5.2	Screw, M6x9.5	59901609
5.3	Cover plug	59911840
6	Thermostatic cartridge	59911525
6.1	O-ring, d 26x2	59911081
6.2	Tightening nut, M34x1, SW32	59911082
7	Non-return valve	59905714
8	Coupling pipe	59901431
8.1	Lock nut Discontinued	59905857
8.5	Angle coupling Discontinued	59905587
N.I.	Thermostatic cartridge, H/C reversed	59911527