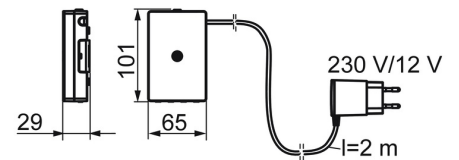
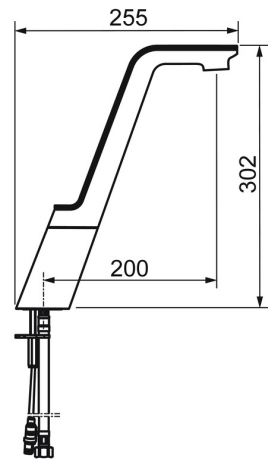
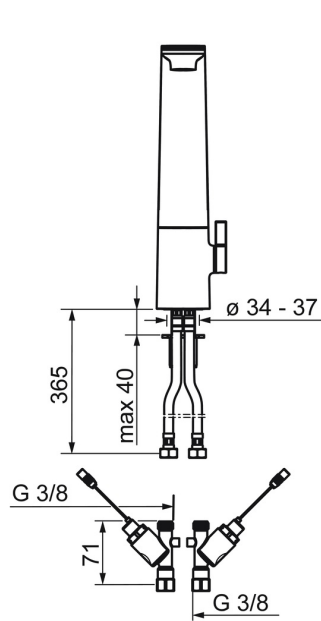
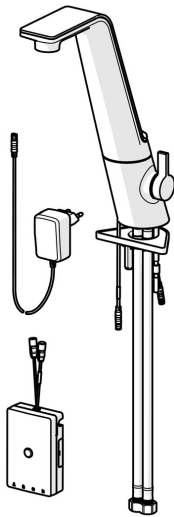


EAN: 4015470030422
static.hansa.com/07762203



- Kitchen
- Tiptronic, Plug transformer
- Deck mounted
- Chrome/White
- Swivel spout, Swivel range limiting option
- Hidden aerator, Standard aerator
- Temperature control handle, Flow control handle
- Mixing valve for manual temperature control
- Solenoid valve, External control unit, Light indicated function(s)
- Flexible inlet pipes
- Software settings adjustable via magnetic key



Technical data

Flow properties

Flow-rate at 3 bar **8.4 l/min**

Technical properties

DN-size (nominal dimension) **DN15**
 Hot water supply **max. +70°C**
 Working pressure **1-10 bar**
 Connection size **G3/8**
 Projection **200 mm**

Software settings

Automatic flush **off (off/12/24/48/72 h)**
 Automatic flush period **30 s (10-600 s)**
 Max. flow period **6 s (4-60 s) / 60 s (30-600 s)**

Electronic properties

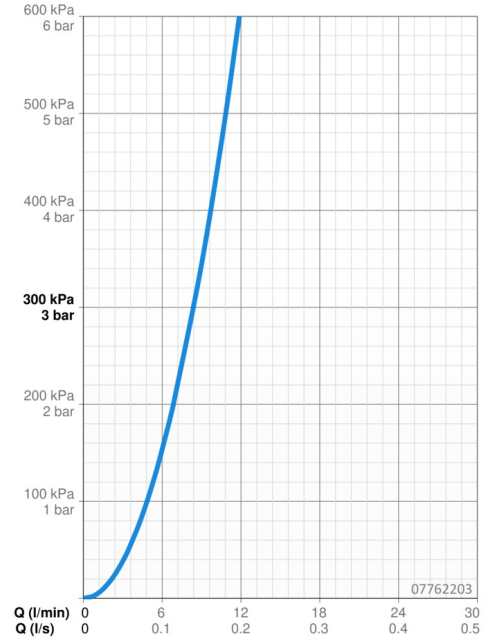
Electrical Connection **230 / 12 V**

Regulations

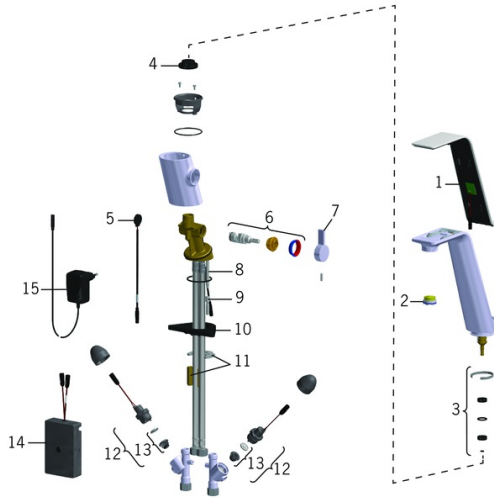
EU Directives **C E Low Voltage Directive 2014/35/EU , EMC Directive 2014/30/EU , RoHS Directive 2011/65/EU**
 EN standard **EN 15091, ETSI EN 301 489-1 V1.9.2 , ETSI EN 300 328 v2.2.2 , EN 61000-6-1:2007 , EN 61000-6-3:2007+A1:2011+AC:2012 , EN 60335-1:2012+A11+A13+A1+A14+A2+A15:2021, Part 19.11.4**
 Noise class **I (ISO 3822) Oras lab.**
 Protection class **IP 44**

Approvals and Declarations

Declaration of conformity **LVD**



Spare parts



SP07762203

	Name	Code
01	Cover full	59914446
02	Aerator and key, M24x1 STD CC S	59914143
03	Bearing kit for spout Discontinued	59914447
04	Spout overturning stopper Discontinued	59914448
05	Electronic casing Discontinued	59914449
06	Temperature adjustment spindle Discontinued	59914450
07	Lever Discontinued	59914451
08	Fixing screw, M6x65 Discontinued	59914259
09	Extension screw kit, M6 Discontinued	59914175
10	Supporting plate	59910008
11	Fixing plates with nuts	59914132
12	Pilot valve, 3 V	59914338
13	Membrane for solenoid valve	1006500V
13	Membrane Discontinued	59914126
14	Control unit	59914452
15	Power supply, 230/12 V, 500 mA	64490100