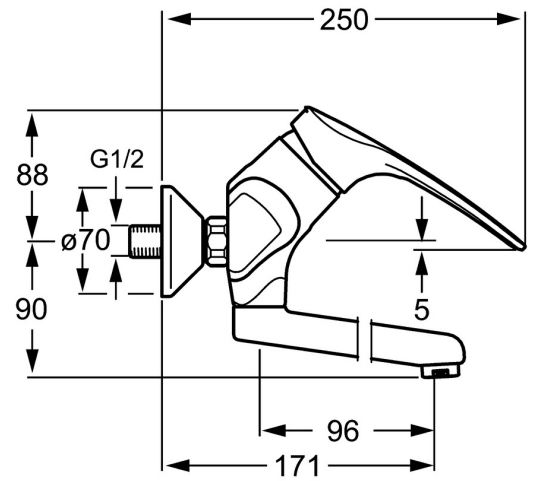
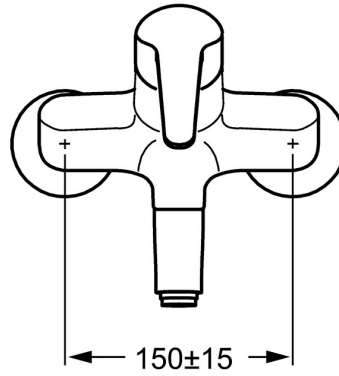
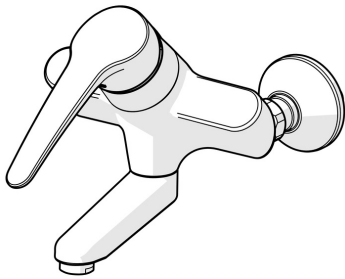


EAN: 4015474080140
static.hansa.com/01968276



- Health & Care
 - Single-lever
 - Wall mounted
 - Chrome
 - Swivel spout, Lockable in the middle position
 - Laminar stream
- Long shape, Hot/Cold symbols, Single operating lever/handle
 - Limitation option for maximum temperature and flow-rate, Adjustable hot water stop (included, retrofittable)
 - \varnothing 48 mm ceramic eco cartridge for flow and temperature control
 - Eccentric coupling(s), with integrated shut-off valve(s)
 - Inner body made of DZR brass, Waterways without nickel coating



Technical data

Flow properties

| | |
|--------------------|-------------------|
| Eco-flow at 3 bar | 6.0 l/min |
| Flow-rate at 3 bar | 12.0 l/min |

Technical properties

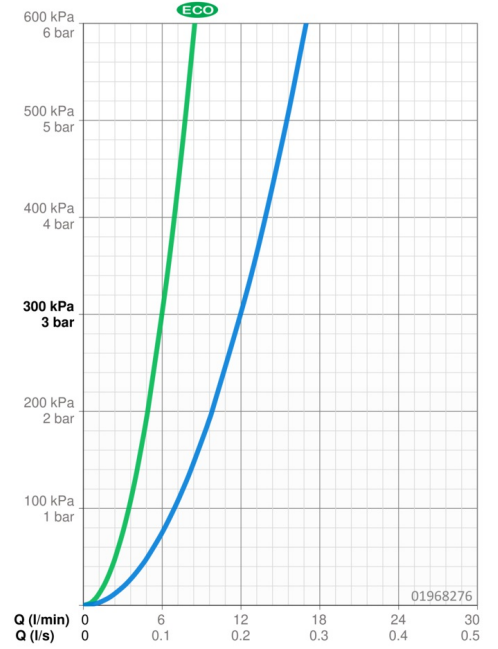
| | |
|------------------------------|--------------------|
| DN-size (nominal dimension) | DN15 |
| Hot water supply | max. +80°C |
| Working pressure | 0.5-10 bar |
| Installation width | 150 ± 20 mm |
| Projection | 171 mm |
| Backflow prevention (EN1717) | AA |
| Material | Brass |

Regulations

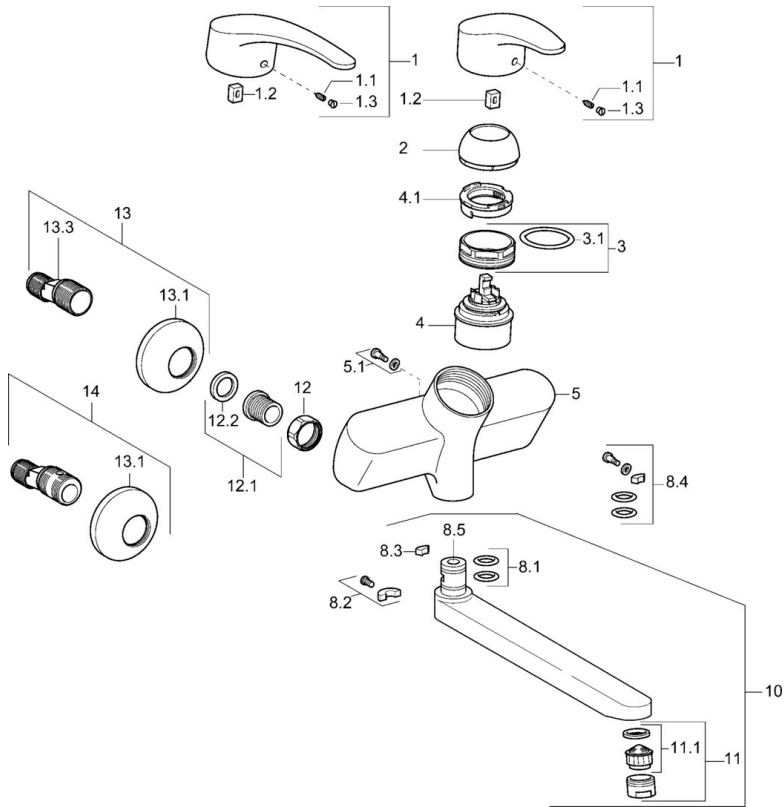
| | |
|-------------|---------------------|
| EN standard | EN 817 |
| Noise class | I (ISO 3822) |

Approvals and Declarations

| | |
|---------------------------|-----------------------|
| KIWA | K6116/08 |
| ABP | PA-IX 10132/IA |
| Declaration of conformity | DoC |



Spare parts



SP01692173

| | Name | Code |
|------|---|----------|
| 1 | Long lever, L=138 | 01880076 |
| 1 | Lever, L=87 mm | 59914195 |
| 1.1 | Screw, M5x8, SW2.5 | 59904755 |
| 1.2 | Bushing | 59904778 |
| 1.3 | Symbol plug Grey | 59912112 |
| 2 | Covering cap | 59912638 |
| 3 | Eye screw, M50x1, SW45 | 59904775 |
| 3.1 | O-ring, d 43x2.5 | 59911166 |
| 4 | Cartridge, 4.8 eco | 59904601 |
| 4.1 | Hot water limiter | 59904759 |
| 5.1 | Fixing screw, M6x12, AF2.5 | 59904804 |
| 8.1 | O-ring, d 15x2.5 | 59910423 |
| 8.2 | Limiter | 59910421 |
| 8.2 | Screw, M6x10, 2.5 | 59911435 |
| 8.3 | Limiter | 59910422 |
| 8.4 | Maintenance set | 59912230 |
| 8.5 | Emptying valve | 59912483 |
| 10 | Spout, L=235 | 59910417 |
| 10 | Spout, L=96 | 59910419 |
| 10 | Spout, L=170 | 59911183 |
| 10 | Spout, L=145 | 59911380 |
| 10 | Spout, L=96 (2019-) | 59914765 |
| 10 | Spout, L=170 (2019-) | 59914766 |
| 10 | Spout, L=235 (2019-) | 59914767 |
| 11 | Aerator, M24x1 Z | 59906826 |
| 11 | Aerator, M24x1 STD PL HC A Laminar (2013-) | 59914054 |
| 12 | Connection nut, G3/4, AF30 | 59902230 |
| 12.1 | Seat, G1/2, L, WAF10 | 59904618 |
| 12.2 | Retaining ring, 23.9x15.2x2 | 59902689 |
| 13 | Eccentric, G3/4xG1/2 | 59904793 |
| 13.1 | Cover flange | 59904796 |
| 13.3 | Eccentric connector, G3/4xG1/2, DN15 | 59910254 |
| 14 | Eccentric coupling with stop valves and cover plates, G1/2xG3/4 | 59902034 |