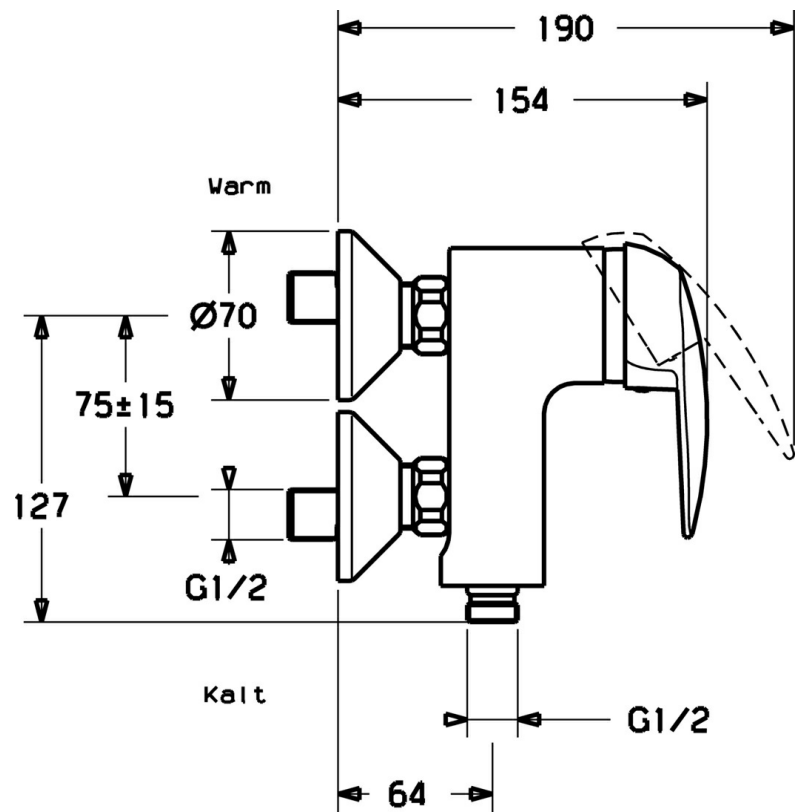


EAN: 4015474059054
static.hansa.com/01760104



- Shower solutions
- Single-lever
- Wall mounted
- Chrome
- Limitation option for maximum temperature and flow-rate, Adjustable hot water stop (included, retrofittable)
- \varnothing 48 mm ceramic eco cartridge for flow and temperature control, Non-return valve(s)
- Silencer(s)
- protected against back-flow in domestic use (according to DIN EN 1717)

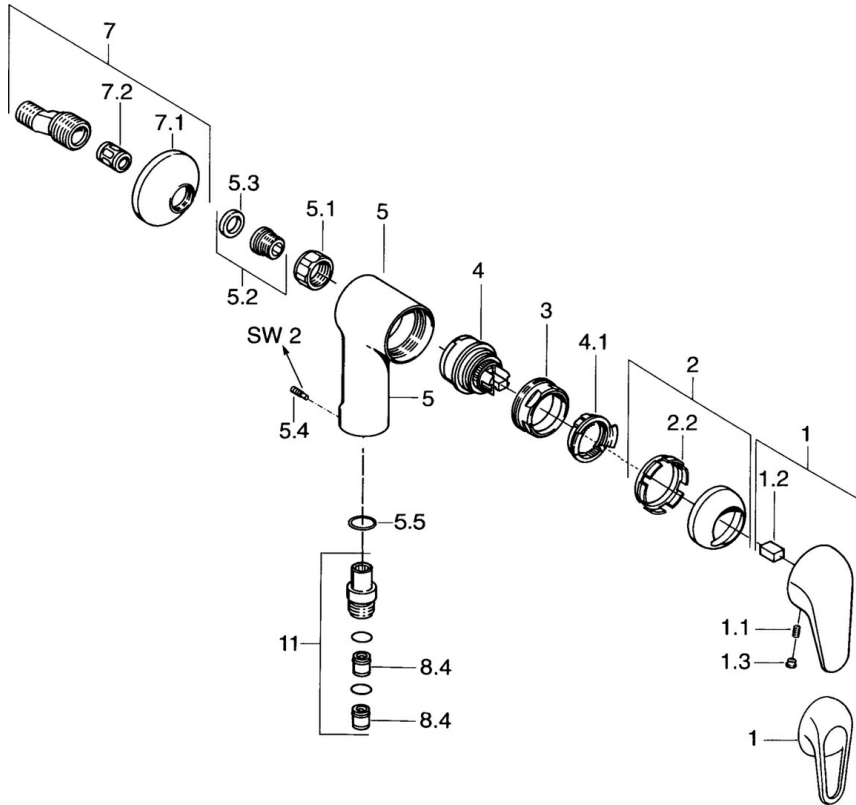


Technical data

Technical properties

| | |
|------------------------------|-------------------|
| Hot water supply | max. +80°C |
| Working pressure | 0.5-10 bar |
| Backflow prevention (EN1717) | EB |

Spare parts



SP01760104

| | Name | Code |
|-----|------------------------------|----------|
| 1 | Lever | 59913904 |
| 1.1 | Screw, M5x8, SW2.5 | 59904755 |
| 1.2 | Bushing | 59904778 |
| 1.3 | Plug, hot/cold | 59906705 |
| 2 | Covering cap | 59906563 |
| 2.2 | Fixing sleeve | 59906695 |
| 3 | Eye screw, M50x1, SW45 | 59904775 |
| 4 | Cartridge, 4.8 eco | 59904601 |
| 4.1 | Hot water limiter | 59904759 |
| 5.1 | Connection nut, G3/4, AF30 | 59902230 |
| 5.2 | Seat, G1/2, L, WAF10 | 59904618 |
| 5.3 | Retaining ring, 23.9x15.2x2 | 59902689 |
| 5.4 | Screw, M4x8 Discontinued | 59901419 |
| 5.5 | O-ring, 18x2.5 | 59902342 |
| 7 | Eccentric, G3/4xG1/2 | 59904793 |
| 7.1 | Cover flange | 59904796 |
| 7.2 | Silencer | 59904792 |
| 8.4 | Non-return valve | 59905714 |
| 11 | Connector, G1/2 Discontinued | 59911385 |