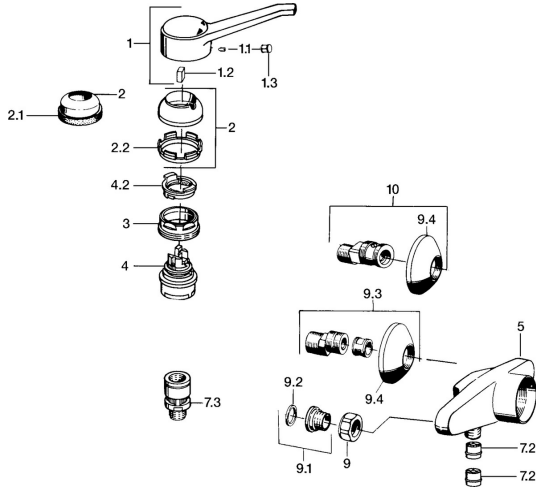


EAN: 4015474559455  
[static.hansa.com/01670106](http://static.hansa.com/01670106)



- Shower solutions
- Single-lever
- Wall mounted
- Chrome
- Single operating lever/handle, Hot/Cold symbols
- Non-return valve(s)

## Technical data

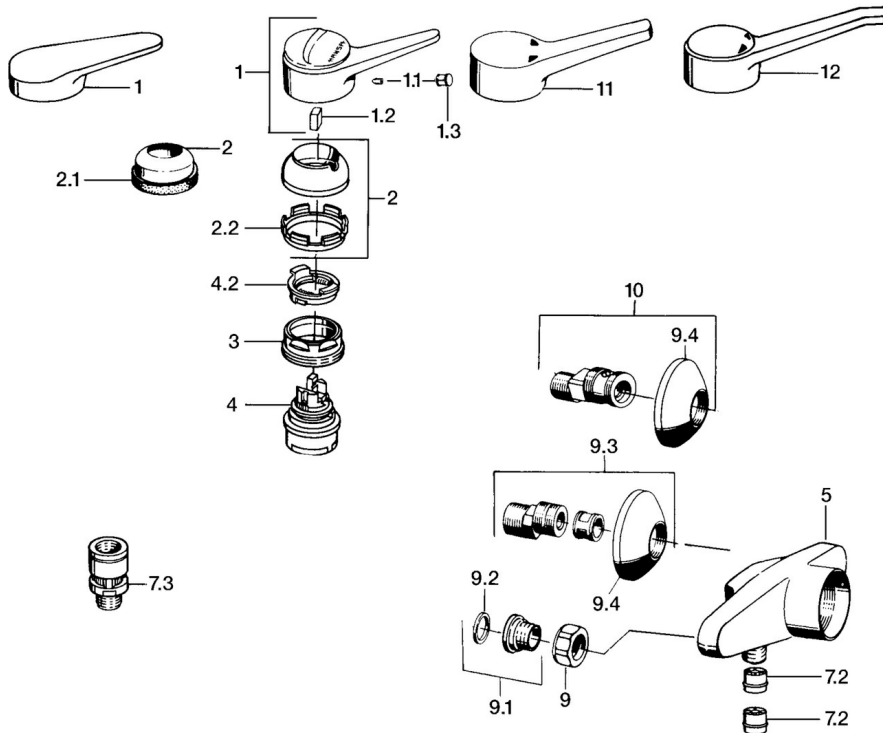
### Technical properties

Hot water supply	<b>max. +80°C</b>
Working pressure	<b>0.5-10 bar</b>
Backflow prevention (EN1717)	<b>EB</b>

### Regulations

EN standard	<b>EN 817</b>
-------------	---------------

## Spare parts



### SP01670102

Name	Code
1 Lever, (-2004)	59901882
1.1 Screw, M5x8, SW2.5	59904755
1.2 Bushing	59904778
1.3 Plug, hot/cold	59906705
2 Covering cap	59906563
2.2 Fixing sleeve	59906695
3 Eye screw, M50x1, SW45	59904775
4 Cartridge, 4.8 eco	59904601
4.2 Hot water limiter	59904759
7.2 Non-return valve	59905714
7.3 Vacuum breaker, DN15	59911330
9 Connection nut, G3/4, AF30	59902230
9.1 Seat, G1/2, L, WAF10	59904618
9.2 Retaining ring, 23.9x15.2x2	59902689
9.3 Eccentric, G3/4xG1/2	59904793
9.4 Cover flange	59904796
10 Eccentric coupling with stop valves and cover plates, G1/2xG3/4	59902034