

EAN: 4015474019782
static.hansa.com/01516206

- Health & Care
- Single-lever
- Deck mounted
- Chrome
- Swivel spout
- Loop shape, Hot/Cold symbols, Single operating lever/handle
- Flexible inlet pipes
- Without pop-up waste

Technical data

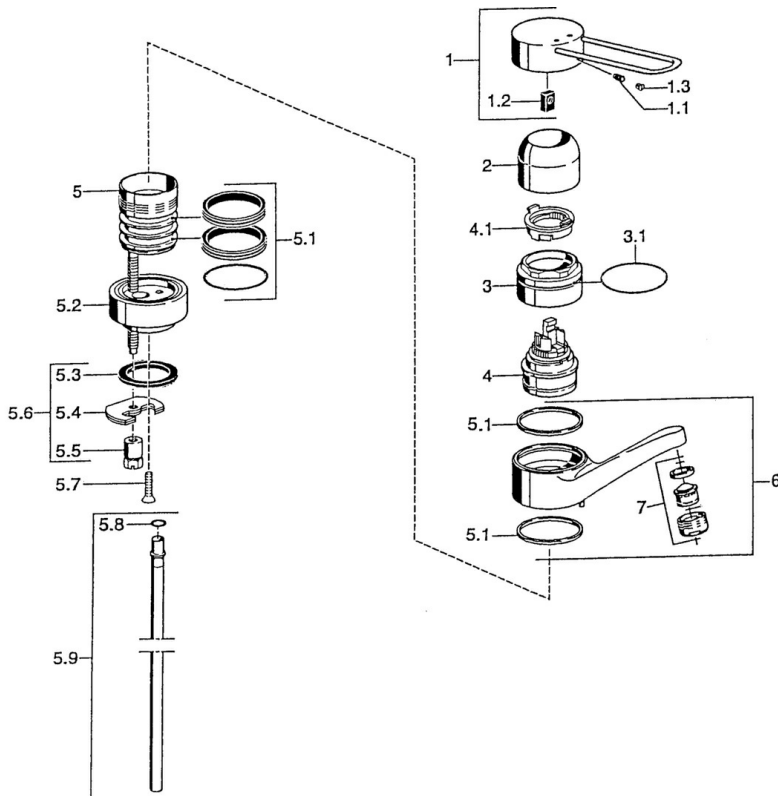
Technical properties

DN-size (nominal dimension)	DN15
Hot water supply	max. +70°C
Working pressure	0.5-10 bar
Connection size	G3/8
Projection	144 mm
Material	Brass

Regulations

EN standard	EN 817
-------------	---------------

Spare parts



SP01516106

	Name	Code
1	Lever Discontinued	599015806
1.1	Screw, M5x8, SW2.5	59904755
1.2	Bushing	59904778
2	Covering cap	59912044
3	Eye screw, M50x1	59912045
4	Cartridge, 4.8 eco	59904601
4.1	Hot water limiter	59904759
4.2	Spacer sleeve Discontinued	59905871
5.1	Sealing kit	59911498
5.2	Raising socket Discontinued	59912046
5.3	Gasket, 37x48x3.5	59911422
5.4	Fixing plate	59904765
5.5	Screw, M8x1, SW13	59904766
5.6	Fixing set	59910749
5.8	O-ring, 9x2	59905095
5.9	Pipe, d 10 mm, L=413	59911423
6	Spout, L=144 Discontinued	59912047
7	Aerator, M24x1, 7 l/min (-2013) Discontinued	59912004
N.I.	Flexible pipe, L=370, G3/8 Discontinued	59911626