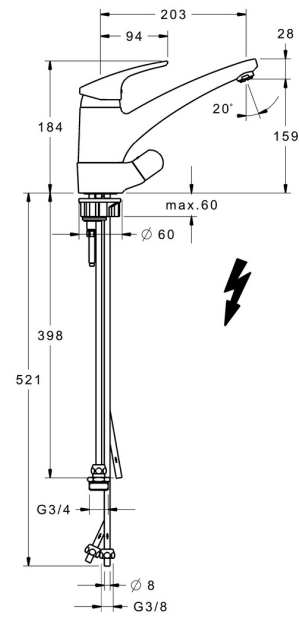
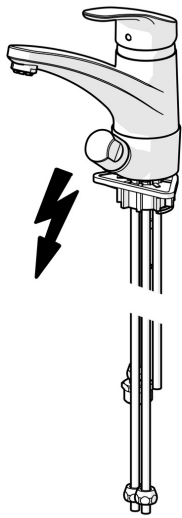


EAN: 4015474276611
static.hansa.com/01211183



- Kitchen
- Single-lever, Low pressure, Dishwasher valve
- Deck mounted
- Chrome
- Swivel spout, Casted construction
- Laminar stream, Standard aerator
- Mechanic stop valve for external equipment
- Hot/Cold symbols, Single operating lever/handle
- Limitation option for maximum temperature and flow-rate, Adjustable hot water stop (included, retrofittable)
- \varnothing 48 mm ceramic eco cartridge for flow and temperature control
- Copper inlet pipes
- Inner body made of DZR brass, Surfaces in contact with drinking water contain less than 0.3% lead, Waterways without nickel coating



Technical data

Technical properties

DN-size (nominal dimension)	DN15
Hot water supply	max. +80°C
Working pressure	1-5 bar
Projection	203 mm
Backflow prevention (EN1717)	AA
Material	Brass

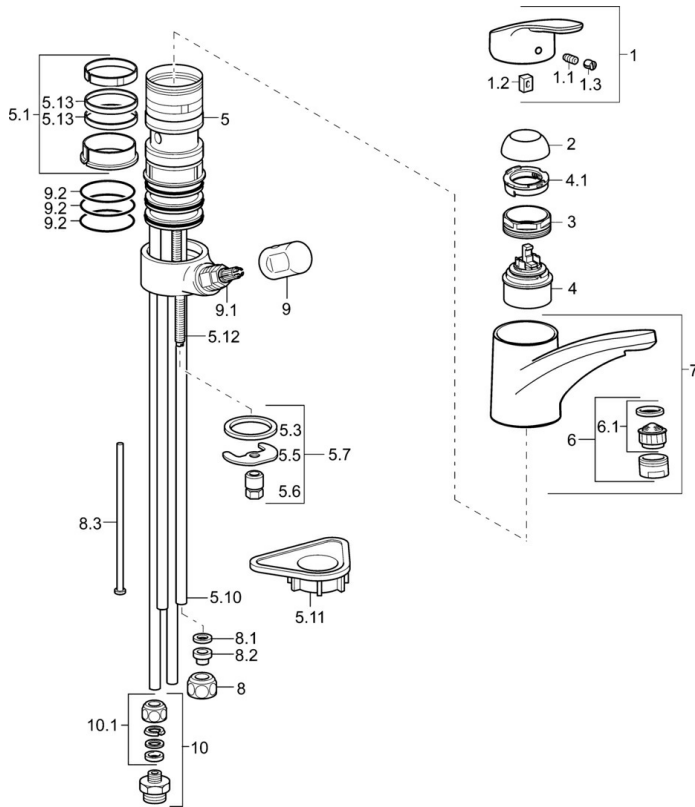
Regulations

EN standard	EN 817
-------------	---------------

Approvals and Declarations

Declaration of conformity	DoC
---------------------------	------------

Spare parts



SP01211183

	Name	Code
1	Lever, L=93 mm	01880083
1.1	Screw, M5x8, SW2.5	59904755
1.2	Bushing	59904778
1.3	Symbol plug Grey	59912112
2	Covering cap	59912647
3	Fixing screw, M50x1, SW45	59904890
4	Cartridge, 4.8 eco	59904601
4.1	Hot water limiter	59904759
5.1	Sealing kit	59912646
5.2	Raising socket, 30 mm	59912710
5.3	Gasket, 37x48x3.5	59911422
5.5	Fixing plate	59904765
5.6	Screw, M8x1, SW13	59904766
5.7	Fixing set	59910749
5.10	Pipe, 8x530 Discontinued	59911895
5.11	Supporting plate	59910008
5.12	Fixing screw, M8x1, L=140	59912474
5.13	Gasket, 40.3x6	59911387
6	Aerator, M24x1 A, low pressure	59902692
6.1	Aerator, M22/24, ND	59901553
7	Spout	59912711
8	Fitting nut	59904969
8.1	Sealing kit, 14.9x8.5x1	59902352
8.2	Sealing kit, 10x8	59902272
8.3	Hose	59902151
9	Handle	59910370
9.1	Headpart, G1/2	59913457
9.2	O-ring, d 45x2.5	59911151
10	Connector nipple, G3/4xG3/8 Discontinued	59910940
10.1	Nipple Discontinued	59910377