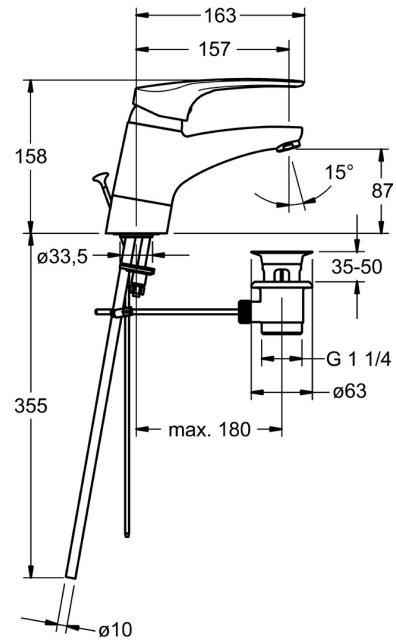
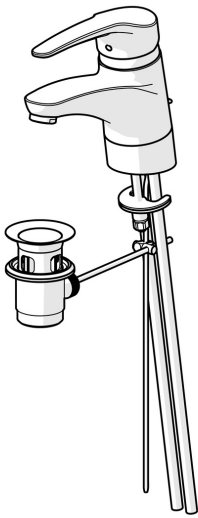


EAN: 4015474271586
static.hansa.com/01192186



- Health & Care
 - Single-lever
 - Deck mounted
 - Chrome
 - Swivel spout
 - Laminar stream
- Long shape, Hot/Cold symbols, Single operating lever/handle
 - Pop-up waste with draw-rod
 - Limitation option for maximum temperature and flow-rate, Adjustable hot water stop (included, retrofittable)
 - \varnothing 48 mm ceramic eco cartridge for flow and temperature control
 - Copper inlet pipes
 - Inner body made of DZR brass, Waterways without nickel coating



Technical data

Flow properties

| | |
|--------------------|-------------------|
| Eco-flow at 3 bar | 6.0 l/min |
| Flow-rate at 3 bar | 12.0 l/min |

Technical properties

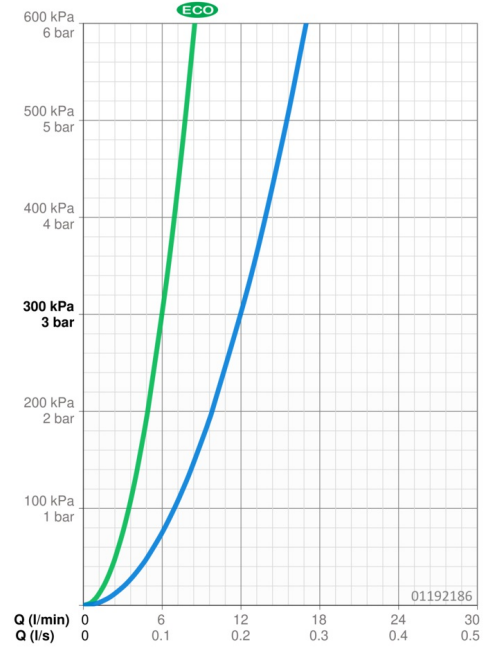
| | |
|-----------------------------|-------------------|
| DN-size (nominal dimension) | DN15 |
| Hot water supply | max. +80°C |
| Working pressure | 0.5-10 bar |
| Connection size | Ø10 |
| Projection | 157 mm |
| Material | Brass |

Regulations

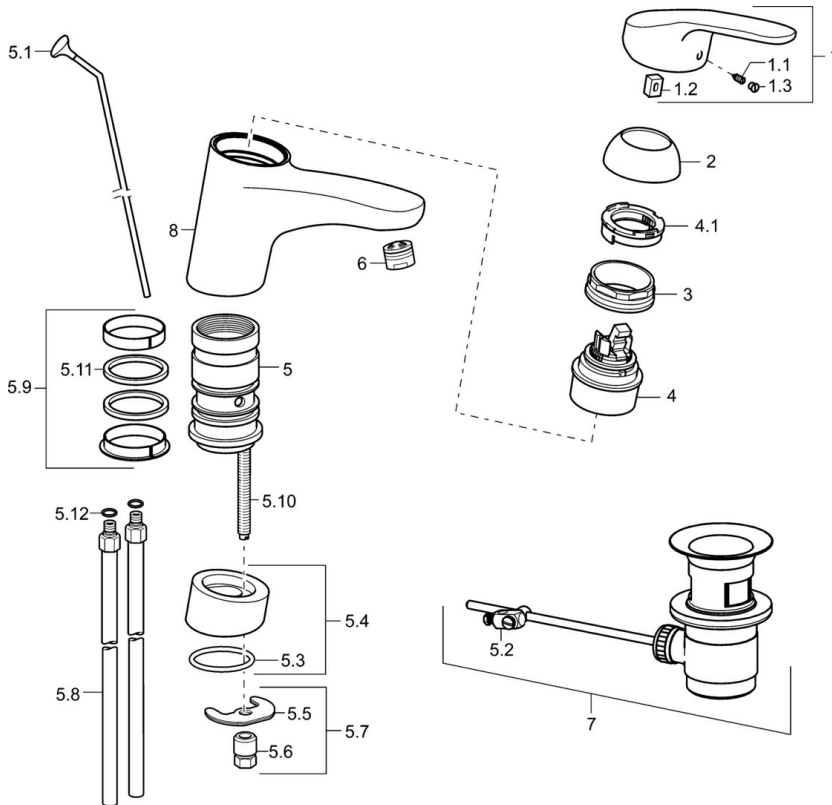
| | |
|-------------|---------------------|
| EN standard | EN 817 |
| Noise class | I (ISO 3822) |

Approvals and Declarations

| | |
|---------------------------|----------------------|
| KIWA | K6116/08 |
| ABP | P-IX 29887/IA |
| Declaration of conformity | DoC |



Spare parts



SP01192183

| | Name | Code |
|------|-----------------------------------|----------|
| 1 | Lever, L=93 mm | 01880083 |
| 1 | Long lever, L=138 | 01880076 |
| 1.1 | Screw, M5x8, SW2.5 | 59904755 |
| 1.2 | Bushing | 59904778 |
| 1.3 | Symbol plug Grey | 59912112 |
| 2 | Covering cap | 59912647 |
| 3 | Fixing screw, M50x1, SW45 | 59904890 |
| 4 | Cartridge, 4.8 eco | 59904601 |
| 4.1 | Hot water limiter | 59904759 |
| 5.1 | Pop-up operating rod Discontinued | 59914050 |
| 5.2 | Swivel joint | 59904624 |
| 5.4 | Raising socket | 59914051 |
| 5.5 | Fixing plate | 59904765 |
| 5.6 | Screw, M8x1, SW13 | 59904766 |
| 5.7 | Fixing set | 59910749 |
| 5.8 | Coupling pipe, L=430, M10x1 | 59912550 |
| 5.9 | Sealing kit | 59912646 |
| 5.10 | Fixing screw, M8x1, L=140 | 59912474 |
| 5.11 | Gasket, 40.3x6 | 59911387 |
| 5.12 | O-ring, d 7.65x1.78 | 59902337 |
| 6 | Aerator, M24x1 (2011-) | 59913739 |
| 7 | Pop-up waste | 59904620 |
| 8 | Spout Discontinued | 59914052 |